

2011
FLORIDA DRIVER'S
HANDBOOK



**Department of Highway Safety
And Motor Vehicles
Tallahassee, Florida 32399-0565**

A complete copy of this manual is available via the internet at:
www.flhsmv.gov

Access to the Governor's homepage is:
www.MyFlorida.com

Contents of this document constitute a public record and consists of the textual content and related diagrams and signage prepared by DHSMV staff and as contained in the 2011 Florida Driver's handbook. Contents of this document do not contain advertising.

Copyright Department of Highway Safety and Motor Vehicles
HSMV 71902 (Revised 09/2010)

Disclaimer

The Florida Driver's Handbook covers many condensed and paraphrased points of Florida's laws and provides safety advice not covered in the laws. The handbook is not a legal authority and should not be used in a court of law. The Florida Driver's Handbook is printed in volume and copies already purchased will not reflect any changes made by Legislature regarding fees or laws passed after the revision date.

Remember Driving Is A Privilege And Not A Right. Protect Yourself And Others By Knowing The Laws And Driving Safely.

The inclusion of advertising does not constitute an endorsement or the accuracy of the ad by the State of Florida or the Florida Department of Highway Safety & Motor Vehicles of the products or services advertised.

TABLE OF CONTENTS

INTRODUCTION

Message from Sandra Lambert, Director	IV
Public Records	V
Warning	V
2010 Legislation	VI

SECTION 1 - DHSMV CONTACT INFORMATION

DHSMV Contact Information	1
Appointment Information	1
Emergency Contact Information	1
Organ Donor Program	1
Move Over Law	1
DOT 511 Program	2
Driving Records	2
Crash Reports	3

SECTION 2 - THE FLORIDA DRIVER LICENSE

Definitions	4
Classified Driver Licenses	4
Who Needs a Florida License	5
Who Does Not Need a Florida License	5
Identification Requirements	5
Non U.S. Citizens	5
Social Security Requirements	6
Address Requirements	7
Vision Requirements	7
Parental Consent	7
Examinations	8
Restrictions and Endorsements	9
Sexual Offenders/Predators & Career Offender	10
Voluntary Contributions	10
License Fees	11

SECTION 3 - OBTAINING YOUR LICENSE / ID CARD

Learner's License	12
Original Class E License	12
License Renewal	12
License Replacement	14
Motorcycle Only License	14
Motorcycle Also License	14
Identification Cards	14

SECTION 4 - DRIVING PRIVILEGE

Revocation, Suspension, & Cancellation	16
The Point System	16
Driving While Impaired	17
Insurance Laws	19
Crashes	20

SECTION 5 - DRIVING SAFETY

Defensive Driving	22
Safety Belts	23
Protecting Children	23
Speed Limits	24
Right-of-Way	24
Pedestrians	25
Bicyclists	25
Sharing the Road with a Bicycle	25
Sharing the Road with a Motorcycle	26
School Buses	26
Making Turns	27
Passing	28
Parking	29
Expressway Driving	30
Animals	31
Handling Emergencies	31
Sharing the Road with a Truck	32
The "No Zone"	32

SECTION 6 - SIGNALS, SIGNS AND PAVEMENT

MARKINGS

Traffic Signals	34
Traffic Signs	35
Railroad Crossing Signs and Signals	39
Drawbridge Signs and Signals	40
Special Signs	40
Pavement Markings	41

SECTION 7 - VEHICLE EQUIPMENT

Equipment Standards	43
Bumper Height Requirements	44
Limitations on Towing	45
Anti-lock Braking	45
Bicycles	46
Mopeds	46
Vehicle Licensing	46

SECTION 8 - DRIVING SCHOOL PROVIDERS

Traffic Law Substance Abuse Education	48
Advanced Driver Improvement	48
Basic Driver Improvement	49
DUI	50

SECTION 9 - STUDY QUESTIONS 53

The Department of Highway Safety and Motor Vehicles touches the lives of nearly every Floridian and visitor to our great state. All members of the Department are devoted to achieving our vision of a safer Florida, and we are proud to serve you.

We are focused and committed to proactively protecting our roadways; enhancing online services; increasing strategic relationships with stakeholders; improving customer service; measuring critical business indicators and managing based on those results.

This driver's handbook provides some basic information you will need to be a safe driver and understand Florida's traffic laws and regulations. This knowledge, along with driving experience and your sense of responsibility while driving can help protect you, your family, your friends and other highway users.

As a Department, we will continue to make doing business with us easier, faster and better.

Safe and considerate driving is everyone's responsibility and we wish you many years of happy and safe driving.

Sandra Lambert, Director
Division of Driver Licenses

Public Records

Florida law and sound records management practices require the collection of certain personal information in the driver licensing process. This personal information identifies an individual and is used for records management, driver improvement, financial responsibility, and law enforcement purposes.

Failure to provide the required information will result in denial of a license or identification card. Falsification of information may result in prosecution. Florida law specifies that all documents or other material made or received in connection with the transaction of official business by any agency are public records. In addition to all documents, information taken from them is subject to public disclosure under Florida's Public Records law. This personal information, including name, address and driver license number is confidential by law, but may be given to law enforcement agencies, insurance companies, credit bureaus, lending institutions, and any other entity exempted by statute. Medical information, social security number and emergency contact information are further protected and may only be released as specifically authorized by Florida law.

The Division of Driver Licenses strives to ensure the accuracy of information obtained in the licensing process and makes every effort to correct any incorrect information in its files. Incorrect information may be corrected by supplying your complete name, date of birth, driver license number, information on the nature of the error and proof that it is an error to the Chief, Bureau of Driver License Records, Neil Kirkman Building, MS 89, Tallahassee, Florida 32399-0575, or telephone (850) 617-2000. Certain information, such as conviction reports received from a court, can only be corrected upon notification from the court that the report was in error.

Automobile insurance information is exempt from the Public Records Law. This information is provided to any party involved in the crash, their attorney or insurance company, law enforcement agencies and officers of the court, after receiving a written request and copy of the crash report.

Warning

Under section 322.212 (5), Florida Statutes, it is a **third degree felony** to use a false or fictitious name in any application for a driver license or identification card, or to knowingly make a false statement, knowingly conceal a material fact, or otherwise commit a fraud in any such application.

Violators face immediate arrest and, upon conviction, penalties up to a maximum fine of \$5,000 and imprisonment up to 5 years.

The Department will suspend the driving privilege for one year of any person who makes a fraudulent application for a Florida driver license.

Under section 322.36, Florida Statutes, it is unlawful for any person to authorize or knowingly permit a motor vehicle to be operated by any person who does not hold a valid driver license.

Important Law Changes

Effective 07/01/10

- Red Light Cameras/Infraction detectors – Department of Highway Safety and Motor Vehicles, County and local law enforcement are authorized to use traffic infraction detectors to enforce red light violations.
- Drivers are limited in the number of traffic school elections they may make in order to avoid points on record, to no more than 5 in a lifetime.
- Tax Collectors and Clerks of the Court are authorized to see individual driver record histories.

Effective 09/01/10

- Drivers of commercial motor vehicles are required to slow before crossing railroad tracks.
- Must remain in a bicycle lane if a lane is provided. If a specified lane is not provided, bicyclist must stay as close as practicable to the right.
- A global positioning system device may be placed on a windshield if it does not hinder the driver's line of sight.
- The minimum fine for speeding in a designated school crossing is \$50.
- Operation of motorized scooter or miniature motorcycles on sidewalks is recognized, if approved by local ordinance.
- Motorized wheel chairs may be operated on a sidewalk

Effective 10/01/10

- A commercial driver who fails to surrender his out of state license when making an application for a Florida license commits a non-criminal traffic infraction, punishable as a moving violation.
- It is a violation for any person whose driver license has been expired for more than 6 months to operate a motor vehicle on the highways of this state.

Section 1 - DHSMV Contact Information

1.1 - Contact Information

Customer Service Center	(850) 617-2000
DHSMV Official Web Site	www.flhsmv.gov
Gather Go Get <i>Find out what you need to bring with you before you make the trip.</i>	GatherGoGet.com (850) 617-3995
DHSMV Virtual Office (<i>online transactions</i>)	GoRenew.com



1.2 - Appointments

Appointments are recommended for any of the services provided by the driver license offices. Appointment scheduling and a listing of driver license offices are available on our homepage at www.flhsmv.gov. Schedule your appointment in advance and report at least five minutes before your scheduled time.

1.3 - Emergency Contact Information

In an emergency situation could law enforcement personnel contact someone for you?

They could if you had entered your information onto the emergency contact information system. The system allows Floridians to voluntarily provide emergency contact information online, giving law enforcement immediate access to this information and making it easier for them to speak with someone quicker in case of emergency.

If you have a Florida driver license or identification card, you can go online at www.flhsmv.gov and enter your emergency contact information. This information is available to law enforcement officers through a secure, web-based system and, by law, can only be used in the event of an emergency.



1.4 - Florida Organ and Tissue Donor Program

Donate Life Florida is the non-profit 501(c)3 organization contracted by the State of Florida, Agency for Health Care Administration to create and oversee the state's organ, eye, and tissue donor registry in addition to implementing educational initiatives tailored to increase understanding and support for donation and donor designation.

The Joshua Abbott Organ & Tissue Donor Registry was created in July 2009 to allow Floridians an easy, user-friendly means of joining the state's Registry. Floridians can join the Registry online at www.DonateLifeFlorida.org, when renewing their driver license online, or when obtaining/renewing their license at a local driver license office. Individuals can also request a registration form by calling Donate Life Florida at 1-877-35-SHARE (1-877-357-4273).



Individuals that already have "organ donor" on their licenses are still encouraged to join the new Registry, ensuring their wishes are documented.

Today, more than 100,000 children and adults await lifesaving organ transplants while hundreds of thousands more are in need of tissue transplants. Together, we can make a difference.

How Can You Help?

1. Learn the facts about organ, eye and tissue donation.
2. Designate your wishes by joining the Joshua Abbott Organ & Tissue Donor Registry at www.DonateLifeFlorida.org.
3. Spread the word about the importance of donation and donor designation with family and friends.
4. Get involved as a volunteer, contribute financially in support of the Registry or statewide educational initiatives, or request a speaker by calling Donate Life Florida at 1-877-35-SHARE.
5. **ALL OF THE ABOVE**

1.5 - Florida's Move Over Law

Florida's Move Over Law protects law enforcement officers, emergency workers and tow truck drivers stopped along roadways while performing their jobs. Violating the Move Over Law puts both yourself and a public safety professional at risk of injury or death and can result in fines and points on your license.

- On a two-lane roadway, you are required to slow to a speed that is 20 miles per hour **less than** the posted speed limit.



- If the speed limit is 20 miles per hour or less, you must slow down to **five** miles per hour.
- If you are driving on an interstate or roadway with multiple lanes of travel in the same direction, and you approach an emergency or law enforcement vehicle parked along the roadway, you must vacate the lane closest to that vehicle **as soon as it is safe to do so**. If you are not able to safely move over, you must slow down to a speed of 20 MPH below the posted speed limit unless directed otherwise by a law enforcement officer.

For more information, please visit www.flhsmv.gov/fhp.

1.6 - Florida Department of Transportation's Free 511 Traffic Information Service

The Florida Department of Transportation's (FDOT) free 511 Traveler Information System provides real-time traffic information in English and Spanish for major Florida roadways. The system is updated with information about crashes, commuter travel times, congestion, lane closures, severe weather, construction and emergency evacuation information on interstate highways, Florida's Turnpike, and other metropolitan roadways. Information is available on the phone by dialing 511, or on the web at FL511.com.



Drivers are encouraged to find out about traffic conditions before getting behind the wheel. FDOT's My Florida 511 personalized services on FL511.com allows registered users to customize routes and alerts to quickly retrieve travel information. Free personalized services include:

Custom Routes

- Program frequently traveled routes using 511-covered roads
- Once 511 is dialed, callers can immediately hear information on their custom routes

Personalized Alerts

- 511 will alert callers about unusual roadway conditions on programmed routes
- Program alerts by time, day and severity of conditions
- Receive alerts by e-mail, text message and/or phone call (cell phone minutes and/or text message charges may apply)

511 Features:

- Traffic information and travel times on Florida interstates, Florida's Turnpike and other major roadways
- Voice-activated or touch-tone navigation
- Travel updates, including accidents, lane closures, severe weather and construction
- Public safety alerts and emergency evacuation information
- Access to public transit, airport and seaport information
- Available 24 hours a day, 7 days a week
- Cell phone or landline use; standard cell phone minutes or text message charges may apply
- Traffic cameras and customized services on FL511.com; users can register for customized trips and e-mail, text and phone alerts

1.7 - Driving Transcripts

You may purchase an uncertified copy of your driving transcript from the driver license and tax collector offices that offer driver license services. Certified copies of your driving transcript are available through the Clerk of the Court or the Bureau of Records. To obtain a certified copy of a driving transcript in the mail, submit a written request that includes your full name, date of birth or approximate age, social security number, Florida driver license number (if available) and the address where to send the record, along with the appropriate fee to:

Bureau of Records
 P.O. Box 5775
 Tallahassee, Florida 32314-5775

If you wish to use next day delivery carriers, please send your request to:

Bureau of Records
 2900 Apalachee Parkway, MS 90
 Tallahassee, Florida 32399-0575.

Cost for records are:

\$8	3-year
\$10	7-year (complete)
\$10	3-year or 7-year (certified)

Clerks of court and tax collectors may charge an additional \$6.25 service fee.

You may pay by personal check or money order made payable to the Division of Driver Licenses. For high-volume requests or corporate/business access to the driver license database, please visit our web page at www.flhsmv.gov/ddl/abstract.html.

1.8 - Crash Reports

Crash reports may be obtained from the investigating agency that completed the crash report. Crash reports are kept in the local districts for two years from the date of the crash. Homicide reports are kept in the local districts for five years from the date of crash.

To order a crash report (\$10) older than 2 years, call (850) 617-3416.

To order a traffic homicide report (\$25) older than 5 years, call (850) 617-2306.

To order traffic homicide photographs, call (850) 617-3409. Photographs are \$1 for 5"x7" or \$1.50 for 8"x10".

NOTE: When requesting photographs, have at least two of the following pieces of information available when you place your request:

Date of Crash
County of Crash
Name of Fatality Victim
Traffic Homicide Case Number

Section 2 - The Florida Driver License

2.1 - Definitions

Business District: An area where 50% or more of the land next to the road is used for businesses.

Bicycle: Every vehicle propelled solely by human power.

Cancellation: The act of declaring a driver's license void and terminated.

Certified Copy: A copy which is marked in some official way to show that it is a true copy of the original document. To get a certified copy of a document, you must contact the agency that issued the original document.

Child Restraints: Infant carriers or removable car seats specially designed to keep babies and young children from being injured in car crashes. A lap belt may be used as a restraint for children four years old or older.

Conviction: A judgment of guilt in a court. In a driver's record, suspended sentences, forfeiting/entreasures of bonds, and pleas of no contest count against the driver just as a conviction does.

Department: The Department of Highway Safety and Motor Vehicles

Endorsement: A special authorization which permits a person to drive certain types of vehicles, transport certain types of property or transport a number of passengers.

Felony: Any criminal offense that is punishable under the laws of this state, or that would be punishable if committed in this state, by death or imprisonment in a state penitentiary. "State penitentiary" includes state correctional facilities.

Immigrant: A "Permanent Resident Alien" who is admitted to the United States as a lawful permanent resident. Immigrants are legally accorded the privilege of residing permanently in the United States and are issued immigrant visas or adjusted to permanent resident status by the USCIS.

Intersection: Where two streets meet or cross.

Motor Vehicle: Any self-propelled vehicle, including a motor vehicle combination, not operated upon rails or guide way, excluding vehicles moved solely by human power, motorized wheelchairs, and motorized bicycles as defined in section 316.003, Florida Statutes.

Motorcycle: Any motor vehicle having a seat or saddle for the use of the rider and designed to travel on not more than three wheels in contact with the ground, but excluding a tractor or a moped.

Non-Immigrant: An alien who seeks temporary entry to the United States for a specific purpose and who has declared ones intention to stay only for a temporary period of time.

Pedestrian: Any person afoot.

Resident: A person, who has his principal place of domicile in this state for a period of more than six consecutive months, has registered to vote, has made a statement of domicile pursuant to section 222.17, Florida Statutes, or has filed for homestead exemption on property in this state.

Residential District: An area where most of the land next to the road is used for homes.

Restriction: A prohibition against operating certain types of motor vehicles or a requirement that a driver comply with certain conditions when driving a motor vehicle.

Revocation: The termination of a licensee's privilege to drive a motor vehicle.

Suspension: The temporary withdrawal of a licensee's privilege to drive a motor vehicle.

U.S. Citizen: A person born in the U.S., Naturalized, or one who has obtained a Certificate of Citizenship from the Department of State.

Vehicle: Every device, in, upon, or by which any person is or may be transported or drawn upon a highway, except devices used exclusively upon stationary rails or tracks.

2.2 - Florida Classified Driver Licenses

The Department of Highway Safety and Motor Vehicles issues the following classes of licenses: Class A, B, C, and E. Classes A, B, and C are for drivers of commercial motor vehicles such as large trucks and buses. Class E is for drivers of non-commercial vehicles. There is a separate manual entitled Commercial Driver License Manual for truck and bus drivers. This manual is available at any driver licenses or tax collector

licensing agent office that offer driver license services or on the Department's web page at www.flhsmv.gov. If you wish to drive a motor vehicle you must be properly tested and licensed.

2.3 - Who Needs One?

- If you live in Florida and want to drive a motor vehicle on public streets and highways.
- If you move to Florida and have a valid license from another state, you must get a Florida license within 30 days of becoming a resident. You are considered a resident of Florida if you:
 - a. Enroll your children in public school, or
 - b. Register to vote, or
 - c. File for a homestead exemption, or
 - d. Accept employment, or
 - e. Reside in Florida for more than six consecutive months.

2.4 - Who Does Not Need One?

The following persons may drive in Florida without a Florida driver license, if they have a valid license from another state or country:

- Any non-resident who is at least 16 years old.
- Persons employed by the United States government driving a United States government motor vehicle on official business.
- Any non-resident working for a firm on a contract for the United States government. (This exemption is only for 60 days.)
- Any non-resident attending college in Florida.
- Persons who drive only vehicles like farm tractors or road machines temporarily on the highway may drive without a license.
- A licensed driver that lives in another state and travels regularly between his home and work in Florida.
- Non-resident migrant farm workers even though they are employed or place children in the public schools, providing they have a valid license from their home state.
- Members of the Armed Forces stationed in Florida and their dependents, with these exceptions:
 - a. Service member or spouse claims homestead exemption (All drivers in family must obtain Florida licenses),
 - b. Service member becomes employed (All drivers in family must obtain Florida licenses),
 - c. Spouse becomes employed (Spouse and children who drive must obtain Florida licenses),
 - d. Child becomes employed (Only employed child who drives must obtain Florida license)

2.5 - Identification Requirements

All applicants for a Florida driver license or identification card must present:

- ✓ **Primary identification;**
- ✓ Proof of **social security number** or if you have not been issued a social security number, you must bring a letter from the Social Security Administration indicating that you were never issued one. In addition you will need to provide a secondary form of identification;
- ✓ Two documents showing your **residential address**.

Please visit www.GatherGoGet.com to obtain a personalized list of requirements.

Step 1: Primary Identification

U.S. Citizens must provide one of the following original or certified documents:

1. Certified United States birth certificate, including territories and District of Columbia. The birth certificate must be issued by a government agency. Hospital birth certificates cannot be accepted.
2. Valid unexpired United States passport or Passport Card
3. Consular Report of Birth Abroad
4. Certificate of Naturalization
5. Certificate of Citizenship

Immigrants must provide one of the following original or certified documents:

- Valid Alien Registration receipt card, (Green card, Form I-151 or I-55, or Permanent Resident Card)
- I-551 stamp in a valid passport with a valid U.S. Visa affixed or on an approved I-94
- Immigration Judges Order, with the customer's A-number, granting asylum
- I-797, with the customer's A-number, stating the customer has been granted asylum
- I-797 or another form from the Citizenship and Immigration Services, with the customer's A-number, stating the customer's application for Refugee status is approved.

Canadian Citizens must provide one of the following original or certified documents:

- Valid Canadian passport
- Original or certified Canadian birth certificate.
- Canadian Naturalization Certificate
- Canadian Certificate of Citizenship

Non-Immigrants must provide one of the following original documents, which must be valid for more than 30 days:

- Valid Employment Authorization Card issued by the United States Citizenship and Immigration Service (Form I-688B or I-766)
- Proof of non-immigrant classification provided by United States Citizenship and Immigration Service (Form I-94, not expired, with required supporting attachment(s). If in doubt regarding required documents, please bring all of your Citizenship and Immigration Services documentation with you). I-94s must be accompanied by a valid Passport with a valid U.S. Visa affixed. Certain classifications require additional documentation.
Some examples are:
 - F-1 and M-1 classification must also be accompanied by an I-20.
 - J-1 or J-2 designation must be accompanied by a DS-2019.
 - Refugee, asylee and parolee classifications must be accompanied by additional documentation.

The following documents will only be accepted with a supporting document, including but not limited to a Passport, Florida Driver License or Identification Card, Driver License from any other state, Employment Authorization Card, Employer Identification, Identification from home country, Identification from school or college, Social Security Card or other Citizenship and Immigration Services document.

- I-571 Travel Document/Refugee Travel Permit
- I-512 Parole Letter Accepted
- IJO- Asylum or Cancellation of Removal - Immigration Judges Order granting Asylum or Cancellation of Removal.

Immigrants, Canadian citizens, and other non-immigrants applying for a Florida driver license will be issued a 30-day paper temporary driving permit without a photo. Non-U.S. citizens applying for an original identification card will be issued a receipt.

The department will review the identification documents provided and electronically verify their validity with the Department of Homeland Security, FDLE and the FBI. If your identity and legal presence is verified, then you will be issued a driver license or identification card within 30 days. The card will be mailed to the address on your driver record and will be issued through the expiration date of your Citizenship and Immigration Services document or one year, whichever is sooner. If we cannot verify your identity or legal presence, your temporary permit will expire and we will deny issuance of a driver license or identification card.

Step 2: Social Security Number or Secondary Identification

Florida law requires the collection of the social security number as proof of your identity. We will electronically verify the information you provide with the Social Security Administration. All applicants for a driver license or identification card must present one of the following original or certified documents as proof of their social security numbers:

- Social Security card
- W-2 form
- Pay check containing your social security number
- SSA-1099
- Non-SSA 1099

The name on your social security document must match the name that you wish to have on your driver license or identification card. If you recently changed your name, please update your records with the Social Security Administration first.

If you have never been issued a social security number and are a U.S. citizen or immigrant, you must provide a letter from the Social Security Administration indicating that a number has never been issued. You must also provide one of the secondary documents listed below. All non-immigrants, including Canadians, must provide one of the following secondary documents:

1. A driver license from the District of Columbia, U.S. Territories, or one of our 50 states
2. School record stating date of birth, which must contain the registrar's signature
3. Transcript of the birth record filed with a public officer charged with the duty of recording certificates
4. Baptism certificate, which shows date of birth and the place of baptism
5. Family Bible record or birth announcement in a baby book
6. An insurance policy on the customer's life, which has been in force for at least two years and which has the month, day and year of birth
7. A military or military dependent identification card (United States Military ID cards with an Officer Rank will be accepted as proof of citizenship only, not as a primary identification)
8. An identification card from the District of Columbia, U.S. Territories or one of our 50 states
9. Florida license record or identification card record
10. Selective Service Registration (Draft Card)
11. Florida or out of state vehicle registration
12. Florida driver license or identification cards
13. Receipt copy of your last Florida driver license issuance
14. Immigration Form I-571
15. Federal Form DD-214 (military record)
16. Marriage certificate
17. Court order, which includes legal name
18. A Florida voter registration card, which has been issued in the past 3 months
19. Personal identification by an examiner or by a person well known to the examiner
20. Social Security Card

21. Parent consent form of minor, signed by the parent or legal guardian
22. Government issued out-of-country passport, driver license, or identification card
23. Concealed weapons permit

Step 3: Proof of Residential Address

All applicants for a driver license or identification card must present **two** documents with their residential addresses:

1. Deed, mortgage, monthly mortgage statement, mortgage payment booklet or residential rental/lease agreement
2. Florida Voter Registration Card
3. Florida Vehicle Registration or Title
4. Florida Boat Registration or Title (if living on a boat/houseboat)
5. Customer under 18 – A statement from a parent, step-parent or legal guardian of the minor is required, Parent, guardian or step-parent must reside at the same residence address as minor. Parent, guardian or step-parent that cannot accompany minor must complete a statement through a Certification of Address form with two proof of residence address. The Certification of Address form can be obtained in a driver license or tax collector licensing agent office or on the department web page at <http://www.flhsmv.gov/>.
Note: You may present one proof of residential address document and use a second from the parent, step-parent, legal guardian or person you live with along with a completed Certification of Address form.
6. Customers 18 years or older – Customers who reside with someone must provide a statement through a Certificate of Address form from that person along with two proof of address in that person's name. The Certification of Address form can be obtained in a driver license or tax collector licensing agent office or on the department web page at <http://www.flhsmv.gov/>.
Note: You may present one proof of residential address document and use a second from the parent, step-parent, legal guardian or person you live with along with a completed Certification of Address form.
7. A utility hook up or work order dated within 60 days of the application
8. Automobile Payment Booklet
9. Selective Service Card
10. Medical or health card with address listed
11. Current homeowner's insurance policy or bill
12. Current automobile insurance policy or bill
13. Educational institution transcript forms for the current school year
14. Unexpired professional license issued by a government agency in the U.S.
15. W-2 form or 1099 form
16. Form DS2019, Certificate of Eligibility for Exchange Visitor (J-1) status
17. A letter from a homeless shelter, transitional service provider, or half-way house verifying that the customer resides at the shelter address.
18. Utility bills, not more than two months old
19. Mail from financial institutions; including checking, savings, or investment account statements, not more than two months old
20. Mail from Federal, State, County or City government agencies (including city and county agencies)
21. Transients – Sexual Offender/Predator/Career Offender: FDLE Registration Form completed by local sheriff's department

2.6 - Vision Requirements

- You will be restricted to wearing corrective lenses when you drive if you need to wear contact lenses or glasses to pass the test.
- Telescopic lenses - you are not eligible for a driver license if you wear glasses with telescopic lenses.

Your driving privilege will be revoked if you are unable to meet the minimum vision standards. To pass, you must meet the following vision standards with or without corrective lenses:

- 20/40 or better vision in each eye with or without corrective lenses meets state requirements without referral to an eye specialist.
- 20/50 or worse vision in either eye with or without corrective lenses are referred to an eye specialist for possible improvement.
- 20/70 or worse vision in either eye, or both eyes together may pass with or without corrective lenses.
- If one eye is blind or 20/200 or worse, the other eye must be 20/40 or better.
- The use of telescopic lenses to meet visual standards is not recognized in Florida.

2.7 -Parent's Consent for Minors

If you are under 18 and are not married, your license application must be signed by one parent or legal guardian.

The application must be signed in front of the examiner or a notary public. Whoever signs your application agrees to take responsibility with you for your driving. If the signer decides not to accept responsibility for your driving, your license will be canceled. To cancel the license, the signer must write a letter to the department, at the address listed below, requesting to withdraw their consent for the minor driver. Include the complete name, date of birth and driver license number of the minor driver in the letter.

Division of Driver License
Neil Kirkman Building
2900 Apalachee Parkway
Tallahassee, Florida 32399
Attn: Bureau Chief of Driver Improvement

The consent form must be signed by an examiner or notarized by a Notary.

2.8 -Examinations

2.8.1 - Purpose of Driver License Examination

The purpose of the license examination is to determine several things:

- a. Can you read and understand road signs, traffic signals and highway markings?
- b. Do you know the Florida driving rules?
- c. Can you see well enough to drive safely?
- d. Do you have the skill and experience to drive safely?
- e. Do you have any physical or mental handicaps that would affect your driving?

2.8.2 - Examination Requirements

Persons applying for an original Florida license are required to take the following tests:

Learner's Driver License - vision, hearing, road signs, and Class E road rules.

Class E license - vision, hearing, road signs, Class E road rules and driving test.

NOTE: Persons holding a valid license from other states U.S. possessions, France, or Canada are only required to take a vision test unless their driving ability is questionable; the license from the other states or U.S. possessions must be surrendered at the time of issuance of the Florida driver license. Persons holding a license from Germany and Taiwan are required to take the vision, hearing and written exam. The driving test may be waived unless their driving ability is questionable.

Motorcycle endorsement - In addition to the above tests, customers requesting motorcycle endorsements must complete a motorcycle rider course (unless they have a motorcycle endorsement on their out-of-state, French or Canadian license).

Commercial driver licenses -see Florida Manual for Truck and Bus Drivers for required exams.

2.8.3 - Examination Information

Vision Test - standard vision screening

Road Sign Test - Multiple choice test which consists of 20 road signs for you to identify by color, shape or meaning.

Road Rules Test - Multiple choice test which consists of 20 questions regarding Florida traffic laws.

Vehicle Inspection - Your vehicle will be inspected to determine that it is safe for a road test.

Driving Test

- You must provide a vehicle for the driving test. If you do not have a valid license, you must be accompanied by a licensed driver.
- An interpreter can be used during the driving test. No other passengers are permitted.

You are expected to perform the following maneuvers on the driving test:

- **Turn About** - Turn your car around in a 30' to 40' space.
- **Shift Gears** -Change gears smoothly and correctly (if your car has a manual shift transmission).
- **Approach of Crossing** -Get in the proper lane and look in each direction. Change gears smoothly and correctly (if your car has a manual shift transmission).
- **Observe Right-of-Way** - Allow pedestrians to cross, pull over and stop for emergency vehicles and do not enter an intersection where you will interfere with other traffic.
- **Straight-In Parking** - Park your vehicle inside the parking space straight-in. When properly parked, the vehicle should be centered inside the space with no part of the vehicle extending out in the traffic lane. This maneuver gives the examiner the opportunity to observe your ability to:
 - a) handle the vehicle in close quarters
 - b) judge distance
 - c) maintain control of the vehicle as you turn into a straight-in parking space
- **Stop/Start on a Grade** - If there is no hill on your driving test, this maneuver is simulated when the car is in the straight-in parking space or when the car is pulled over to the side of the road before the turnabout maneuver. You will be instructed to show or tell the examiner what you would do if you were going to leave the vehicle parked up or down a hill, with or without a curb.
- **Stop Quickly** - Drive at 20 miles per hour and make a quick, safe stop when the examiner instructs you.
- **Backing** -Back for a distance of 50 feet at a slow speed. Do not use the rear-view mirror when backing. Look to the rear instead.
- **Obey Stop Signs** - Give the proper signal if turning, approach in the proper lane, come to a complete stop before reaching the pedestrian crosswalk or stop line, and remain stopped until you can move safely without interfering with cross traffic.
- **Obey Traffic Signals** - Get into the proper lane and approach the light at a speed that will allow you to stop if the light should change. When you must stop, stop before the pedestrian crosswalk or stop line. When the light turns green, do not move forward until the other traffic has cleared the intersection. Give the correct signal for stopping and turning. Watch for "no turn" and "one way" signs.
- **Signal and Turn** - Get into the proper lane and signal your turn for the last 100 feet. You may use either hand signals or mechanical signals. Slow before reaching the crosswalk and turn into the proper lane.
- **Passing** - Always look ahead and behind to make sure you can pass safely. Pass on the left, unless the car ahead is about to make a left turn or is in the left turn lane on a street with more than one lane in each direction. Do not pass on the shoulder (side of the road).
- **Stay in Proper Lane** - Drive in the right lane except on a one-way street. Do not change lanes until you may do so safely.
- **Follow at a Safe Distance** - Do not drive too closely behind other cars. Use the Two Second Rule.
- **Use Proper Posture** - Keep both hands on the steering wheel and do not rest your elbow in the window.

The examiner will explain any mistakes you may have made after the test is completed. If you disqualify on the driving test, you will be asked to study or practice before returning for another test. You will be asked to return another day for additional tests.

If you pass the examination, the examiner will collect the fee and issue your license. If you surrender a valid learner's license and do not need to make changes, you are not charged additional fees for the replacement Class E.

2.8.4 - Driver Education

Driver education courses can help you develop the skills you need to be a safe driver. You can obtain more information by referring to your local telephone directory under **Driving Instruction** or **Traffic Schools**.

2.8.5 - Third Party Testing

Many driver education teachers assist the Department of Highway Safety and Motor Vehicles (DHSMV) in licensing new drivers. Students who complete their driver license tests through DHSMV approved Driver Education Licensing Assistance Program (DELAP) courses in participating public or private schools will have the results entered into the Department's test records by their driver education teacher.

The test results will be used by the local driver license office for issuance of a learner's driver license or Class E license. DHSMV may, however, test any student on a random basis before issuing a driver license.

2.9 - Physical and Mental Requirements

You must list any physical or mental problems on your license application that might affect your driving. Many of the physical problems can be handled by placing restrictions on your license. If you have epilepsy, fainting spells, dizziness, blackouts or any other medical condition that could impair your driving, you may be asked to have your doctor complete a medical report form. These forms may be requested through your local driver licenses office and are mailed directly to you. The report must be completed by your doctor and submitted to the Department before a license is issued. If you are diabetic and use insulin, you may request that "Insulin Dependent" is indicated on your license.

2.10 - Restriction and Endorsement Codes on Florida Licenses

2.10.1 - Restriction Codes

- A Corrective Lenses** means a person must wear corrective lenses at all times when operating a vehicle.
- B Outside Rearview Mirror (Left Side)** means the vehicle the person is driving must have a left outside rearview mirror on the car.
- C Business Purposes Only** means a driving privilege that is limited to any driving necessary to maintain livelihood, including driving to and from work, necessary on-the-job driving, driving for educational purposes, and driving for church and for medical purposes.
- D Employment Purposes Only** means a driving privilege that is limited to driving to and from work and any necessary on-the-job driving required by an employer or occupation.
- E Daylight Driving Only** means the person can only drive during daylight hours.
- F Automatic Transmission** means the person can only drive a vehicle that has automatic transmission.
- G Power Steering** means the person must drive a vehicle with power steering.
- I Directional Signals** means a person must drive a vehicle equipped with mechanical signals.
- J Grip on Steering Wheel** means the vehicle must be equipped with a knob or grip on the steering wheel.
- K Hearing Aid** means the person must wear a hearing aid at all times while driving a CDL vehicle.
- L Seat Cushion** means the person must use a seat cushion at all times while driving.
- M Hand Controls or Pedal Extension** means the vehicle must be equipped with hand controls or a pedal extension.
- N Left Foot Accelerator** means the vehicle must be equipped with a left foot accelerator.
- P Probation-Interlock Device** means the vehicle must be equipped with a device that locks the ignition.
- S Other Restrictions** means there are other restrictions imposed on this license.
- X Medical Alert Bracelet** means the person wears a medical alert bracelet.
- Y Educational Purposes Only** means the person can drive only for educational purposes.

2.10.2 - Restriction Codes Appearing on Commercial Driver Licenses Only

1. **Vehicles W/O Air Brakes** - issued to those who have not passed the required written and/or skills tests for the operation of vehicles with air brakes.
2. **CDL-Intrastate Only (CMV)** - issued to those who are authorized to operate commercial motor vehicles inside Florida only.
3. **Bus Only (CMV)** - issued to persons who are only authorized to operate a commercial vehicle that is a bus.
4. **CMV<26,001 LBS Gross Vehicle Weight Rating**
5. **No Tractor/Trailers**
6. **No Class A Passenger Vehicles**
7. **No Class B Passenger Vehicles**

NOTE: Drivers with a restriction on their license who do not comply with the requirements of the restriction can be issued a citation for violation of restriction and could be suspended. Offenses of this type are a second degree misdemeanor, except for violations of restriction code X.

2.10.3 - Endorsement Codes

These endorsements are placed on Class A, B, or C commercial driver licenses.

- H Placarded Hazmat** - issued to those who have passed the required written tests and who will transport placarded hazardous materials.
- N Tank Vehicles** - issued to those who have passed the required written tests and who will drive tank vehicles.
- P Passengers** - issued to those who have passed the required written and skills tests and who will drive passenger vehicles.
- T Double/Triple Trailers** - issued to those who have passed the required written tests and who will drive double or triple tractor trailer vehicles.

S School Bus - issued to those who have passed the required written and skills tests and who will drive a school bus.

X Placarded Hazmat & Tank Vehicles - issued to those who qualify for endorsements H and N.

2.11 - Selective Service

State law requires any male that is a U.S. citizen or immigrant who is at least 18 years old but less than 26 years old, to comply with Federal Selective Service System requirements when applying to receive a driver's license, a learner's driver's license, a commercial driver's license, an identification card, or a renewal or replacement card or license. Any driver license or identification card applicant consents to the Federal Selective Service System requirements.

2.12 - Traffic Law and Substance Abuse Education

If you have never been issued a license in any jurisdiction (state or country), you are required to complete a Traffic Law and Substance Abuse Education course before you will be issued a license. A list of TLSAE providers can be found in the back of this handbook or on our web site located at www.flhsmv.gov. You can also find locations in your area using your local phone directory.

2.13 - Sexual Offenders and Sexual Predators

Within 48 hours after completing the required initial registration as a sexual predator or sexual offender in Florida, all sexual predators and sexual offenders who are not incarcerated, including sexual predators and sexual offenders who are under the supervision of the Florida Department of Corrections, shall register in person at a driver license office of the Department of Highway Safety and Motor Vehicles or Tax Collector licensing agent. If otherwise qualified, such person shall secure a Florida driver license or identification card.

The sexual predator or sexual offender must identify him or herself as such and provide his or her place of permanent or temporary residence. Post office box numbers may not be used in place of a physical residential address.

Each time a sexual predator's driver license or identification card is subject to renewal and within 48 hours after any change of the predator's or offender's residence or change in the predator's or offender's name by reason of marriage or other legal process, the predator or offender shall report in person to a driver licenses office or Tax Collector licensing agent. If otherwise qualified, such person shall secure a Florida driver license or identification card.

For more information about registration and notification requirements, you may contact your local sheriff's office, your supervising officer with Probation & Parole or the Florida Department of Law Enforcement at 1-888-FL-PREDATOR (1-888-357-7332), Sexual Offender/Predator Unit, Post Office Box 1489, Tallahassee, Florida 32302-1489; www.fdle.state.fl.us.

2.14 - Career Offender

As of January 1, 2003: Career offenders are certain persons who are designated as habitual violent felony offenders, violent career criminals, or three-time violent felony offenders, ss. 775.26, 944.608, 944.609.

Within 2 working days after completing the required registration as a career offender in Florida, all career offenders who are not incarcerated, including career offenders who are under the supervision of the Florida Department of Corrections, shall register in person at a driver license office of the Department of Highway Safety and Motor Vehicles or Tax Collector licensing agent. If otherwise qualified, such person shall secure a Florida driver license or identification card.

Each time a career offender's driver license or identification card is subject to renewal and within 2 working days after any change of the career offender's residence or change in the career offender's name by reason of marriage or other legal process, the career offender shall report in person to a driver license office or Tax Collector licensing agent. If otherwise qualified, such person shall secure a Florida driver license or identification card. The career offender must identify him or herself as such and provide his or her place of permanent or temporary residence. Post office box numbers may not be used in place of a physical resident address.

For more information about registration and notification requirements, you may contact your local sheriff's office, your supervising officer with Probation & Parole or the Florida Department of Law Enforcement at 1-888-357-7332, Career Offender Unit, Florida Department of Law Enforcement at 1-888-FL-PREDATOR (1-888-357-7332), Sexual Offender/Predator Unit, Post Office Box 1489, Tallahassee, Florida 32302-1489; www.fdle.state.fl.us.

2.15 - Voluntary Contributions

When you are applying for a driver license or identification card you may voluntarily contribute to the following special trust funds:

Children's Hearing Help Fund - \$1 suggested minimum contribution

Family First - \$1 suggested minimum contribution

Florida Council of the Blind - \$1 suggested minimum contribution

Health Care Trust Fund - \$1 suggested minimum contribution

Hearing Research Institute Incorporated - \$2 suggested minimum contribution

Juvenile Diabetes Foundation International - \$1 suggested minimum contribution

League Against Cancer/La Liga Contra el Cancer - \$1 suggested minimum contribution

Prevent Blindness Florida - \$1 suggested minimum contribution

Prevent Child Sexual Abuse - \$1 suggested minimum contribution

- Ronald McDonald House** - \$1 suggested minimum contribution
- Senior Vision Services** - \$1 suggested minimum contribution
- State Homes for Veterans Trust Fund** - \$1 suggested minimum contribution
- Stop Heart Disease** - \$1 suggested minimum contribution
- The ARC of Florida** - \$1 suggested minimum contribution

2.16 - Fees

Fees for License

Initial license fee for first Florida license	\$48
Learners driver license (Original)	\$48
Class E renewal	\$48
Learners license renewal	\$48
Commercial Driver License	\$75
Stolen license-if police report filed	No fee
Replacement license	\$25

Other Fees

Commercial Driver License endorsements	\$ 7
Hazardous Materials Endorsement Application and Background Check	\$91
Motorcycle endorsement	\$ 7
Identification Card (original)	\$25
Identification Card (replacement or renewal)	\$25
Stolen identification card-if police report filed	No fee
Delinquent fee for renewals after expiration date	\$15
Written Re-exams	\$10
Driving Re-exams	\$20
Tax Collector Convenience Fee (for services provided at a Tax Collector offices)	\$6.25

Service Fees

Administrative Fee Alcohol & Drug-Related Offenses (In addition to any other required fees)	\$130
After a license has been revoked	\$75
After a license has been suspended	\$45
After a license has been disqualified	\$75
Worthless checks	\$55
Suspension for Failure to Pay or Appear for a Traffic Citation, Failure to Pay Child support, Failure to Pay Court Financial Obligations	\$60

Insurance Suspension Fees

Failure to maintain PIP insurance:	
(1 st suspension)	\$150
(2 nd suspension)	\$250
(3 rd suspension)	\$500
Failure to maintain liability insurance	\$15
(1 st suspension – resulting from a DUI conviction)	\$150
(2 nd suspension – resulting from a DUI conviction)	\$250
(3 rd suspension – resulting from a DUI conviction)	\$500

Note: If you are suspended under both the PIP and the liability law, you will be charged both reinstatement fees.

Driver Licenses Agents (Tax Collectors)

Your local Tax Collector may provide full or limited driver license services. Tax Collectors may assess a \$6.25 service fee.

Section 3 - Obtaining Your License / ID Card

3.1 - Learner's Driver License

A person who holds a Learner's license must be accompanied by a licensed driver, 21 years of age or older, who occupies the front passenger seat closest to the right of the driver. Drivers can only drive during daylight hours the first three months from the original issue date and must be accompanied by a licensed driver 21 years or older, who occupies the front passenger seat. After the first three months, drivers may operate a vehicle from 6 a.m. to 10 p.m. with a licensed driver, 21 years of age or older, occupying the front passenger seat. **Drivers with a Learner's license are ineligible for a motorcycle endorsement.**

Requirements

- Be at least 15 years old.
- Pass vision, road signs and road rules tests.
- Have the signature of one parent (or guardian) on the parent consent form, if under age 18.
- Completion of Traffic Law and Substance Abuse Education Course.
- Primary Identification, Proof of Social Security Number and Proof of residential address
- Must be in compliance with school attendance, if under 18.

3.2 - Class E License

3.2.1 – Original Issuance Requirements

- Be at least 16 years old.
- Pass vision, road signs, road rules and driving tests.
- Have the signature of one parent (or guardian) on the parent consent form, if under age 18.
- Completion of Traffic Law and Substance Abuse Education Course.
- Primary Identification, Proof of Social Security Number and Proof of residential address
- Must be in compliance with school attendance, if under 18.

3.2.2 - Learner's to Class E

The following requirements must be met in order to obtain a regular Class E license:

- Must hold the learner's license for 12 months or until the 18th birthday, whichever comes first.
- Must have NO moving traffic violation convictions 12 months from the issue date of the Learner's license. Or
- May have one moving traffic violation conviction within 12 months from the issue date of the learner's license, if adjudication is withheld.
- A parent, legal guardian or responsible adult 21 years of age or older, must certify that the driver has had at least 50 hours of driving experience, of which 10 hours must be at night.
- Pass a driving test

3.2.3 - Reciprocating

The road signs, road rules, and driving (skills) exams are reciprocated if you present a driver license from any of the following:

- United States
- United States Territories, Possessions (including Panama Canal Zone if issued prior to January 1, 2000)
- Canada *
- Germany (reciprocate the skill exam only)
- France
- Taiwan (reciprocate the skill exam only)
- United States Military

* Reciprocation Options for Canadians

Canadian customers can reciprocate examination requirements by surrendering their Canadian driver license. If the Canadian driver license is not surrendered, applicable examinations are required.

3.3 - License Renewal

Driver licenses are valid for six to eight years. Expiration dates may vary for license renewals issued to non-immigrants.

Primary identification, proof of social security number and two proofs of residential address are required if you have not been issued a Florida driver license or identification card in a field office since January 1, 2010. See section 2 for identification requirements, acceptable proof of social security and acceptable proof of residential address. Non-immigrants may have additional requirements. See Non-Immigrant section 3.3.6.

Your license may not be renewed if:

- a. You are not qualified to receive a license.
- b. You did not answer a summons which involved a traffic violation.
- c. Your driver license is suspended, revoked or cancelled.
- d. You do not present the required documentation.

3.3.1 - Name Changes

To have your name changed on your Florida driver license or identification card, you must:

- Bring your original or certified copy of a government issued marriage certificate, divorce decree, or court order to a driver license issuance office. Church marriage certificates are not acceptable.
- Have your name changed on your social security card

In addition:

Immigrants and Non-Immigrants:

- You must have your name changed on your United States Citizenship and Immigration Services documents before you can change your name on your Florida driver license or identification card.

Canadian Citizens:

- you must have your name changed on your Canadian passport before applying for a name change on your driver license or identification card.

3.3.2 - Change of Address

To change your residential address on your driver license or identification card, you must present two proofs of residential address.

3.3.3 - Renewal Options

Persons holding a non-commercial driver license may renew using one of the convenience methods listed below.

Mail

Drivers who are U.S. citizens or immigrants may use a convenience method for every other renewal. You may receive a mail-in renewal packet approximately 30 days prior to your license expiration. There are no additional fees for renewing by mail.

Internet

You can renew by internet at www.GoRenew.com.



After your request is processed, you will receive a six or eight year license. Florida law requires that you destroy your old driver license after receiving the new license. Application for renewal received after the license expiration date requires a \$15 late fee.

All drivers who are 80 years of age or older and who are in the process of renewing their driver license are required to pass a vision test. The test may be administered at the driver license office at no additional charge or by your Florida licensed health care practitioner, such as your medical doctor, osteopath or optometrist. A vision examination report must be completed and submitted to the department if your vision test is administered by your doctor. For your convenience, you can ask your health care practitioner to file the form electronically on the web www.flhsmv.gov/ddl/vision. Subsequent to it being filed electronically, you will then be able to renew via the internet, or mail.

Should you elect to have your vision tested at the local driver license office or Tax Collector licensing agent, please schedule an appointment so that we can serve you more efficiently. Upon passing the vision screening, you can complete the renewal process. However, if a problem is detected, you will be referred to your eye doctor for follow-up, prior to being able to renew.

3.3.4 - Military Renewal by Mail or Online

Members of the U.S. Armed Forces serving on active duty outside of Florida may renew their license by mail or online at www.GoRenew.com. Their spouses and children living with them may do the same. If your name changes while you are deployed or out of state, contact the Department at militaryrenewal@flhsmv.gov or call 850 617-2000. Provide your name as it appears on your license, the driver license number, your date of birth and out-of-state address and zip code. The department will send you the appropriate renewal packet by return mail or email.

3.3.5 - Veterans

Any veteran honorably discharged from the Armed Forces who was issued a valid identification card by the Division of Veteran's Affairs of the Department of Administration, or a letter of disability determination from the Veterans Administration and has been determined by the Veteran's Administration to have a 100% service-connected disability, is exempt from paying certain driver license fees such as initial license fees and renewal fees. All identification card fees are exempt.

3.3.6 - Non-Immigrants

- Any non-immigrant holding a driver license or identification card who needs a renewal or replacement driver license or identification card must apply in person at a driver license office or Tax Collector licensing agent and present identification and legal presence documents.
- If you do not have the required documents showing legal presence, your driver license or identification card will be retained and a receipt Issued for the driver license or identification card transaction. If your Florida driver license has not expired, you will be issued a 30-day temporary permit. When you return with the required documentation, you will be processed for a renewal or replacement license and the expiration date will be changed to the expiration date.
on your Citizenship and Immigration Services document up to one year.
- Proof of social security number (if one has been issued) and two proofs of residential address are required.

3.4 - License Replacement

If your driver license is lost or stolen, apply for a replacement immediately. The replacement license fee of \$25.00 will be waived if you provide a copy of the police report and there are no changes to the card. A replacement may be obtained in a State or Tax Collector issuance office or using a convenience method listed in the renewal section.

Primary identification, proof of social security number and two proofs of residential address are required if you have not been issued a Florida driver license or identification card in a field office since January 1, 2010. See section 2 for identification requirements, acceptable proof of social security and acceptable proof of residential address. Non-immigrants may have additional requirements. See Non-Immigrant section 3.3.6.

3.4.1 - Name Changes

To have your name changed on your Florida driver license or identification card, you must:

- Bring your original or certified copy of a government issued marriage certificate, divorce decree, or court order to a driver license issuance office. Church marriage certificates are not acceptable.
- Have your name changed on your social security card

In addition:

Immigrants and Non-Immigrants:

- You must have your name changed on your United States Citizenship and Immigration Services documents before you can change your name on your Florida driver license or identification card.

Canadian Citizens:

- you must have your name changed on your Canadian passport before applying for a name change on your driver license or identification card.

3.4.2 - Change of Address

You must obtain a new license within 10 days of any change to your mailing or residential address. You may change the address on your driver license or identification card by:

1. Mail: be sure to include your complete name, new address, driver license number, and date of birth. Mail to Division of Driver Licenses, Mail Stop 92, Post Office Box 5775, Tallahassee, Florida 32314-5775. Include a \$25 check or money order payable to DHSMV. You will receive the appropriate corrections by mail. Please allow 30 days for processing.
2. Visiting your local driver licenses office or Tax Collector licensing agent. There is a \$25 license fee.
3. Internet at: www.gorenew.com. There is a \$25 license fee.
4. After your request is processed, you will receive a new license. Florida law requires that you destroy your old driver license after receiving the new license.

Non-immigrants will need to go to a driver license office or Tax Collector licensing agent to change the address on a driver license or identification card.

If you fail to report a change of address you may not receive your motor vehicle registration renewal or your driver's license renewal.

If you are pulled over by law enforcement and the address on your driver license is incorrect, you may receive a citation.

3.5 - Motorcycle Only License

Under 18

- Must hold a Learner's License at least 12 months or until the 18th birthday prior to the issuance of a Class E Motorcycle Only license.
- Must have NO moving traffic violation convictions 12 months from the issue date of the learner's license.
- Must provide completion of an approved motorcycle safety course.

Over 18

- Pass the vision, road sign and road rule examinations or hold a current Learner's License. Must provide completion of an approved motorcycle safety course. Or Provide an out-of-state motorcycle only license (except Alabama).

3.6 - Motorcycle Also License

All persons requesting a motorcycle endorsement:

- Must hold a Class E license or higher or meet the requirements for a Class E license.
- Must complete a motorcycle safety course, Basic Rider Course (BRC) Or
- Provide an out-of-state license with a motorcycle endorsement (except Alabama).

3.7 - Identification Cards

If you need an identification card, you can apply for one at any driver license office. Persons holding a driver license who wish to obtain a Florida identification card must surrender their driver license. Section 322.08(6) F.S. prohibits a person from holding both a driver license and an identification card. To obtain an identification card, you must:

1. Be five (5) years of age or older. Any person, regardless of age, can be issued an identification card if applying for a disabled parking permit.
2. Present required identification. **See section 2 for a list of acceptable primary identification.
3. Provide proof of your Social Security number (unless one has never been issued). See section 2 for acceptable proof of social security number.
4. Provide proof of residential address. (Two documents will be required) See section 2 for acceptable proof of residential address.

The card will contain your color photograph, full name, sex, address, date of birth, and other data the Department may require. Identification cards issued to persons 5 to 14 years of age will be valid for four years; all others will be valid for eight years.

NOTE: Expiration dates may vary for identification cards issued to Non-Immigrants.

Section 4 – Driving Privilege

4.1 - Driving a Motor Vehicle in Florida is a Privilege You Earn

You cannot obtain a license in Florida under the following conditions:

- If your license is suspended or revoked in any state;
- If you are addicted to drugs or alcohol;
- If you cannot drive safely because of mental or physical problems; (Deafness alone will not prevent a person from being issued a driver license.)
- If you are under the legal age for licensing (15 for Learner's license, 16 for Class E).

Every driver who obtains a license must drive safely to keep it. If you break the traffic laws or become an unsafe driver, your license can be taken away. It can be suspended, revoked, or canceled.

Your license can be **SUSPENDED** if you:

- Make a fraudulent driver license application.
- Allow your license to be used for a purpose that is against the law.
- Are convicted in a traffic court and the court orders that your license be suspended.
- Refuse to take a test to show if you are driving while under the influence of alcohol or drugs.
- Misuse a restricted license.
- Earn a certain number of points for traffic offenses on the point system.
- Break a traffic law and fail to pay your fine or appear in court as directed.
- Fail to pay child support.
- Fail to carry insurance on your vehicle.
- Fail to stop for a school bus.
- Use tobacco if you are under age.
- Commit Retail theft.
- Education Non-Compliance (School Dropout)

Your license must be **REVOKED** if you are found guilty of, or department records show:

- Driving while under the influence of alcohol, drugs or other controlled substances.
- A felony in which a motor vehicle is used.
- Not stopping to give help when the vehicle you are driving is involved in a crash causing death or personal injury.
- Lying about the ownership or operation of motor vehicles.
- Three cases of reckless driving within one year. Forfeiting bail and not going to court to avoid being convicted of reckless driving counts the same as a conviction.
- An immoral act in which a motor vehicle was used.
- Three major offenses or 15 offenses for which you receive points within a 5-year period.
- A felony for drug possession.
- Vision worse than the standard minimum requirements.
- Racing on the highway. A court may also order that your license be revoked for certain other traffic offenses.

Cancellation

If your license was issued because of a mistake or fraud (giving false information or identification), it will be cancelled.

4.2 - Point System

Violation points*

Leaving the scene of a crash resulting in property damage of more than \$50	6
Unlawful speed resulting in an crash	6
Reckless driving	4
Any moving violation resulting in a crash	4
Passing a stopped school bus	4
Driving during restricted hours	3
Unlawful speed - 16 MPH or more over lawful or posted speed	4
The fine for exceeding the speed limit by more than 50 mph is \$1,000 for the first offense and \$2,500 for the second.	
Violation of a traffic control signal/sign/device (red lights) (if camera-enforced, no points will be assessed)	4
Unlawful speed - 15 MPH or less over lawful or posted speed	3
Fines are doubled when infractions occur within a school zone or construction zone, with possible civil penalties up to \$1,000 and can be required to complete driving school course.)	
All other moving violations (including parking on a highway outside the limits of municipalities)	3
Violation of curfew	3
Open container as an operator	3
Child restraint violation	3

**The driver receives the same number of points listed if the conviction occurs out-of-state or in a federal court.*

Length of Suspension

Not more than:

12 points within a 12-month period

30 days

18 points within a 18-month period

3 months

24 points within a 36-month period

1 year

In computing points and suspensions, the offense dates of all convictions are used. Three points will be deducted from the driver record of any person whose driving privilege has been suspended only once under the point system and has been reinstated, if such person has complied with all other requirements.

NOTE: A point suspension does not prohibit these convictions from being used to accumulate additional suspensions or revocations.

4.3 - Red Light Cameras/Infractions

Local and state governments are authorized to use traffic infraction detectors to enforce red light violations. It includes the use of traffic infraction enforcement officers, the mailing of an initial notice of violation within 30 days of the offense and mailing a traffic citation within 60 days if payment has not been received. The red light violation does not result in points being placed on the driver's record.

4.4 - Mandatory Restriction for Minors

Any driver under the age of 18 who accumulates six or more points within a 12 month period is automatically restricted for one year to driving for "**Business Purposes ONLY**". If additional points are accumulated the restriction is extended for 90 days for every additional point received.

4.4.1 - Time Restrictions

A licensed driver (Class E or higher) who is under the age of 17 may not operate a motor vehicle between 11:00 p.m. and 6:00 a.m., unless accompanied by a driver who is 21 years of age or older and holds a valid driver license (Class E or higher), or the operator is driving to or from work. A licensed driver (Class E or higher) who is 17 years of age may not operate a motor vehicle between 1:00 a.m. and 5:00 a.m., unless accompanied by a driver who is 21 years of age or older and holds a valid driver license (Class E or higher), or the operator is driving to and from work.

4.5 - Zero Tolerance

Any driver under 21 years of age who is stopped by law enforcement and has a breath or blood alcohol level of .02 or higher will automatically have their driving privilege suspended for 6 months. Any driver under 21 with a breath or blood alcohol level of .05 or higher is required to attend a substance abuse course. An evaluation will be completed and parents or legal guardians will be notified of the results for all drivers under the age of 19. Any driver who has a breath or blood alcohol level of .08 or higher can be convicted for driving under the influence (DUI). If the driver refuses to take a test, his or her driving privilege is automatically suspended for one year.

4.6 - Reinstatement & Administrative Hearings

If your driving privilege is suspended or revoked you may be eligible to apply for a hardship license or reinstatement. For eligibility information, contact the local Bureau of Administrative Reviews office, driver license office, Tax Collector licensing agent, or the Customer Service Center. You can be charged with DUI if you are found to be driving or in actual physical control of a motor vehicle while under the influence of alcoholic beverages or controlled substances. Controlled substances include: prescription drugs, depressants, stimulants, narcotics, hallucinogens and inhalants. You will be administratively suspended if you have a breath or blood alcohol level of .08 or above or refuse to submit to a chemical test. This suspension requires a mandatory period without a license. If you wish to appeal this suspension, you must apply for a formal or informal review hearing at the appropriate Division of Driver Licenses or Bureau of Administrative Reviews office within 10 days of your date of arrest. This suspension is in addition to any penalties directed by the court. Hearing filing fees up to \$25 may apply.

4.7 – Driving While Under the Influence

4.7.1 - Penalties for DUI

(Including previous DWI and DUBAL convictions)

First Conviction

Fine	\$500-\$1,000 , with BAL .15 or higher or minor in the vehicle, not less than 1,000 or more than \$2,000
Community Service	50 hours
Probation	Not more than 1 year
Imprisonment	Not more than 6 months; with BAL .15 or higher or minor in the vehicle, not more than 9 months
License Revocation	Minimum 180 days
DUI School	12 hours DUI School Requirement Evaluation conducted to determine need for treatment
Ignition Interlock Device	Up to 6 continuous months

Second Offense/Conviction

Fine	\$1,000-\$2000, with BAL .15 or higher or minor in the vehicle, not less than \$2000 or more than \$4000
Imprisonment	Not more than 9 months; 2nd conviction within 5 years, 10 days in jail, 48 hours of confinement must be consecutive
License Revocation	Minimum 180 days; 2nd offense within 5 years after first conviction; 5 year revocation
DUI School	21 hours DUI School Requirement Evaluation conducted to determine need for treatment
Ignition Interlock Device	Minimum of 1 year

Third Offense/Conviction

Fine	\$2,000-\$5,000, with BAL .15 or higher or minor in the vehicle, not less than \$4,000
Imprisonment	Not more than 12 months; 3rd conviction within 10 years, mandatory 30 days in jail; 48 hours must be consecutive
License Revocation	Minimum 180 days; 3rd offense within 10 years after second conviction; 10 year revocation
DUI School	21 hours DUI School Requirement Evaluation conducted to determine need for treatment
Ignition Interlock Device	Minimum of 2 years

Fourth or More Conviction

Fine	Not less than \$1000
Imprisonment	Not more than 5 years
License Revocation	Permanent revocation
Ignition Interlock Device	Five years

4.7.2 - Drinking and Driving

If you drink alcohol, even a little, your chances of being in a crash is much greater than if you did not drink any alcohol. No one can drink alcohol and drive safely, even if you have been driving for many years. Young drivers are more affected by alcohol because their bodies are still in the growth process and their livers have not developed to the extent that they can efficiently process the alcohol in their blood stream.

Because drinking alcohol and then driving is so dangerous, the penalties are very tough. People who drive after drinking risk heavy fines, higher insurance rates, loss of license and even jail sentences. A DUI conviction will remain on your driving record for 75 years.

4.7.3 - The Dangers of Drinking and Driving

Alcohol reduces all of the important skills necessary to drive safely, such as judgment, reaction, vision and concentration. Alcohol is absorbed into the lining of the stomach and then passes directly into the bloodstream and reaches your brain within minutes after consumption. Alcohol affects those areas of your brain that control judgment and skill and is one reason why drinking alcohol is so dangerous; it affects your judgment. **A person's judgment is the first thing affected after drinking an alcoholic beverage.** Good judgment is important to driving but in this case, judgment helps you to know when to stop drinking. Alcohol puts good judgment on hold. You do not know when you have had too much to drink until it is too late. It is a little like a sunburn, by the time you feel it, it is already too late.

Alcohol slows your reflexes and reaction time, reduces your ability to see clearly and makes you less alert. As the amount of alcohol in your body increases, your judgment worsens and your skills decrease. You will have trouble judging distances, speeds and the movement of other vehicles. You will also have trouble controlling your vehicle. **If You Drink, Do Not Drive!** The best advice is, if you drink alcohol, do not drive. Even one drink of alcohol can affect your driving. With two or more drinks in your bloodstream you are **impaired** and could be arrested.

It takes about an hour for your body to get rid of each drink. Time is the only thing that will sober you up.

There are ways of dealing with social situations. Arrange to go with two or more persons and agree which one of you will not drink alcohol. You can rotate among the group being a "designated driver." You can use public transportation or a taxi, if available.

4.7.4 - Implied Consent Law

You will be asked to take a blood test, a urine test, or a breath test if an officer thinks that you are under the influence of alcohol or drugs while driving. By law, if you drive in Florida, you have agreed by signing your driver license to take these tests if asked. If you refuse to take the tests when asked, your license will automatically be suspended for one year. A second refusal will result in an 18 month suspension and is a second degree misdemeanor.

In DUI cases involving death or serious injury, you will be required to take the blood test without your consent. The blood must be drawn by a doctor, nurse or other health professional. If you are unconscious and cannot refuse the blood test, blood may be drawn. The results of the test may be used as evidence, even if you object after becoming conscious.

4.7.5 - Other Drugs and Driving

Besides alcohol, there are many other drugs that can affect a person's ability to drive safely. These drugs can have effects like those of alcohol, or even worse. This is true of many prescription drugs and even many of the drugs you can buy without a prescription. Drugs taken for headaches, colds, hay fever or other allergies or those to calm nerves can make a person drowsy and affect their driving. Pep pills, "uppers" and diet pills can cause a person to be nervous, dizzy, and unable to concentrate and can affect his or her vision. Other prescription drugs can affect your reflexes, judgment, vision and alertness in ways similar to alcohol.

If you are driving, check the label before you take a drug for warnings about its effects. If you are not sure it is safe to take the drug and drive, ask your doctor or pharmacist about any side effects.

Never drink alcohol while you are taking other drugs. These drugs could multiply the effects of alcohol or have additional effects of their own. These effects not only reduce your ability to be a safe driver but could cause serious health problems, even death.

Illegal and some legal drugs may affect your ability to be a safe driver. For example, studies have shown that people who use marijuana make more mistakes, have more trouble adjusting to glare, and get arrested for traffic violations more than other drivers.

4.8 - Emotions

Emotions can have an effect on driving safely. You may not be able to drive well if you are overly worried, excited, afraid, angry or depressed.

- If you are angry or excited, give yourself time to cool off. If necessary take a short walk, but stay off the road until you have calmed down.

- If you are worried, down or are upset about something, try to keep your mind on your driving. Some find listening to the radio helps.
- If you are impatient, give yourself extra time for your driving trip. Leave a few minutes early. If you have plenty of time, you may not tend to speed or do other things that can get you a traffic ticket or cause a crash. Don't be impatient. Wait for a train to cross in front of you. Driving around lowered gates or trying to beat the train can be fatal.

4.9 - Other Serious Violations of the License Law

You can be put in jail or made to pay a fine for the following offenses:

- Changing your license in any way. Any changes must be made by the Department.

Unlawful use of your license, including allowing your license to be used by another person.

- Making a fraudulent application for a driver license or identification card.
- Having more than one Florida driver license.
- Allowing an unlicensed person to use your car, or renting a motor vehicle to someone without a license.
- Giving false statements to an officer or in a courtroom.
- Knowingly giving false information in crash reports.
- Failing to make crash reports.

4.10 - Florida Motor Vehicle Insurance Laws

In Florida, there are two motor vehicle insurance laws. They are the Financial Responsibility Law and the No-Fault law. It is important that you understand these laws because if you do not have the proper insurance, you can lose your driver license and license plate(s) and have to pay large fees to get them back.

4.10.1 - The Financial Responsibility Law

The Financial Responsibility Law requires owners and operators of motor vehicles to be financially responsible for damages and/or injuries they may cause to others when a motor vehicle crash happens.

This law requires any person to have bodily injury liability insurance at the time of the following:

1. A citation for DUI, which results in a revocation.

These cases require the following minimum insurance coverage:

- \$100,000 Bodily Injury Liability (BIL) (to one person).
- \$300,000 Bodily Injury Liability to two or more persons.
- \$50,000 Property Damage Liability (PDL)

If you do not have the required insurance to comply with the Financial Responsibility Law, your driver license and/or license plates will be suspended for up to three years. You will have to pay a reinstatement fee and show the department certified proof of full liability insurance on Form FR-44 for three years from the original suspension date to get your driving privilege back.

2. A suspension for excessive points against your driver license.
3. A crash where you are at fault and injuries have occurred.
4. A revocation for Habitual Traffic Offender.
5. A revocation for any serious offense where this department is required to revoke your license.

The cases listed above (excluding DUI) must have the following minimum insurance coverage:

- \$10,000 Bodily Injury Liability (BIL) (to one person).
- \$20,000 Bodily Injury Liability to two or more persons.
- \$10,000 Property Damage Liability (PDL), or
- \$30,000 Combined single limits.

If involved in any of the above violations (excluding DUI) and you do not have insurance to comply with the Financial Responsibility Law, your driver license and/or license plates will be suspended for up to three years. You will have to pay a \$15 reinstatement fee and show the department certified proof of full liability insurance on Form SR-22 for three years from the original suspension date to get your driving privilege back.

In addition, if you are the driver or the owner of a vehicle which is in a crash that is your fault, this department can require you to pay for the damages before your driving privilege is reinstated.

Under this law, to protect yourself and others, you should have liability insurance on any motor vehicle you own or drive, including motorcycles.

4.10.2 - The No-Fault Law

The Florida No-Fault Law requires owners of motor vehicles with four or more wheels (excluding taxis and limousines) that have been in the state for at least 90 consecutive or non-consecutive days during the past 365 days to purchase a policy delivered or issued for delivery in this state. The minimum coverage is:

- \$10,000 of Personal Injury Protection (PIP)
- \$10,000 of Property Damage Liability (PDL)

You cannot buy a license plate and registration for a car, or other four-wheel vehicle, without having coverage issued in Florida. Once you have this insurance, anytime you renew it, fail to renew it, cancel it, or the insurance company cancels, the insurance company must notify this department. The department will then notify you to provide proof of new coverage. If you fail to provide proof of insurance, your driver license and license plate(s) will be suspended for up to three years.

You must maintain insurance coverage throughout the vehicle registration period or you must surrender the license plate(s) to any driver license office.

If you are cited by a law enforcement officer for not providing proof of insurance and pay the civil penalty or are convicted in court, your driving privilege will be suspended.

If your driver license and license plate(s) are suspended for not having insurance under the No-Fault Law, you will have to pay \$150 and show proof of current insurance to get them back. For a second offense within three years, you will pay \$250. For a third offense within three years, you will have to pay \$500. Also, if your driver license and plate(s) have been under suspension for 30 days or more for a no-fault insurance violation, a police officer can seize your license plate immediately. To prevent an insurance suspension of your license and avoid reinstatement fees turn in your license plate to a Florida driver license or tax collector office prior to canceling your insurance.

Effective 10/01/06, all taxicabs are required to maintain the following insurance to register a vehicle in Florida.

Bodily Injury Liability per person:	\$125,000
Bodily Injury Liability per occurrence:	\$250,000
Property Damage Liability:	\$ 50,000
Or Combined Single Limit Coverage:	\$300,000

General Information

You will be issued a Florida Insurance I.D. Card from your insurance company. You must have this card ready to show to any law enforcement officer to prove that you have the required insurance. If not, you may receive a ticket for not having proof of insurance.

If your driver license or license plate(s) are suspended for not obeying either of these laws, you cannot get a temporary license for any reason, not even for work purposes only. Any person who makes a false statement or commits forgery about their motor vehicle insurance can be guilty of a second degree misdemeanor.

The Department will always provide you with an opportunity to prove insurance coverage or be heard before being suspended.

How to comply:

1. By purchasing a motor vehicle insurance policy from a company licensed to do business in Florida.
2. By obtaining a Financial Responsibility Certificate from the Bureau of Financial Responsibility after posting a satisfactory surety bond of a company licensed to do business in Florida.
3. By obtaining a Financial Responsibility Certificate from the Bureau of Financial Responsibility by depositing cash or securities with the Department.
4. By obtaining a Self Insurance Certificate from the Bureau of Financial Responsibility by providing satisfactory evidence of possessing a net unencumbered capital.

Remember: Automobile insurance is an important part of your driving privilege. Protect yourself and others by having and keeping the proper insurance coverage.

4.11 - Traffic Crashes

4.11.1 - Your Responsibilities

1. **Stop**
If you are in a crash while driving, you must stop. If anyone is hurt, you must get help. You must also be ready to give your name, address, and vehicle registration number, as well as show your driver license to others involved in the crash.
2. **Report the Crash**
If the crash causes injury, death, or property damage, it must be reported. Call the local police, the Florida Highway Patrol, or the county Sheriff's office. If the crash involves a charge of driving under the influence (DUI) or results in death, injury, or property damage to the extent a wrecker must tow a vehicle, the officer will fill out a report. If the crash is investigated by an officer, the driver need not make a written report. If property damage appears to be over \$500 and no report is written by an officer, you must make a written report of the crash to the Department of Highway Safety and Motor Vehicles within 10 days. The officer will provide you with a copy of the form for your records.
3. **Move Your Car If It Is Blocking Traffic**
If your car is blocking the flow of traffic, you must move it. If you cannot move it yourself, you must get help or call a tow truck. This is true anytime your vehicle is blocking the flow of traffic whether it has been involved in a crash or not.
4. **Appear In Court**
If you are charged in a crash, you may have to go to court. The officer who comes to the scene of the crash will file charges against any driver who violated a traffic law. Anyone who is charged will have a chance to explain to the court what happened. The court will then decide

what the penalty is. Anyone who is not charged with violating the law may have to come to court as a witness. If you are found at fault in a collision where anyone is injured and transported to a medical treatment facility or it is your second collision in a two-year period, you will be required by law to attend a Traffic Collision Avoidance Course. The traffic school that conducts this course can be found in the yellow pages of your local telephone book under **Driving Instruction**.

A driver convicted of leaving the scene of a crash involving death or personal injury will have his or her license revoked. The driver is also subject to criminal penalties.

Crash Involving an Unattended Vehicle

If, while driving, you hit a vehicle with no one in it or if you damage any object that belongs to someone else, you must tell the owner. Give the owner your name, address, and tag number in person or in a note attached to the object that was hit. Report the crash immediately to the proper law enforcement agency.

4.11.2 - Three Crashes in Three Years Law:

Effective January 1, 2010, section 322.0261(1)(c) requires that if you were convicted of or pleaded nolo contendere to your third traffic offense that caused a crash within 36 months, you must complete a department approved driver improvement course that includes behind-the-wheel training and an assessment of your driving safety. The department notifies you of this requirement based on a qualifying third at fault crash occurring on or after January 1, 2010.

What you must do to avoid driver license cancellation:

- Complete 12 hours of the 3-in-3 Crash Course or an approved advanced driver improvement course (ADI).
- Receive 4-hours of behind-the-wheel training from a Florida licensed commercial driving school (CDS).
- Pass the extended road test with a DL examiner or Tax Collector licensing agent.

Failure to complete these requirements within 90 days will result in a license cancellation.

4.12 - Littering

Drivers are responsible for any littering from their vehicles. Use ash trays for cigarettes and litter bags for trash while riding in motor vehicles. Empty ashtrays and litter bags only into trash cans.

Littering is a crime. People who throw trash on public streets and highways can be fined up to \$500 or jailed up to 60 days. You can be charged with a first-degree misdemeanor and fined up to \$1,000 if dumping more than 15 pounds of trash.

The court may also require you to pick up litter along roadways.

4.13 - Road Damage

It is against the law to damage the roads by driving on the rim of a flat tire or by any other means.

Section 5 - Driving Safety

Good driving is based on practice and being alert at the wheel. When driving, you must make sure that nothing interferes with your ability to see the road, react to situations or operate your vehicle properly. You must look down the road, to the sides and behind your vehicle and be alert for unexpected events. Be alert to what is going on around you and do not take your eyes off the road for more than a few seconds at any one time. Do not have objects inside your vehicle that might interfere with your ability to drive safely. This might include objects that obstruct your view of the road or mirrors.

5.1 - Distracted Drivers

Good drivers develop habits that focus their full attention on driving. Some drivers can develop bad habits that can be very dangerous when driving. Some bad habits that distract your attention away from driving are:

- Driving when ill, upset or angry.
- Driving while eating and drinking.
- Driving while adjusting the radio or changing CDs/tapes/digital players.
- Driving while calling, answering, talking or texting on a mobile phone.
- Reading while driving.
- Driving while drowsy or fatigued.

5.2 - Getting Ready to Drive

Before you start your engine:

- Make sure all windows are clean. Remove anything that blocks your view of the road.
- Adjust the seat so you can reach all controls.
- Adjust the inside and outside rearview mirrors. You should not have to lean forward or backward to use them.
- Lock all car doors.
- Put on your safety belts. Ask all passengers to do the same.
- Make sure your car is in park or neutral gear before starting the engine. Never move your car until you have looked in front, behind and to the side for pedestrians and oncoming traffic. Then, signal and pull into traffic when safe.

5.3 - Defensive Driving

Defensive driving means doing all you can to prevent crashes. As a defensive driver, you will “give” a little. You will change your driving to fit the weather conditions, the way you feel, and the actions of other drivers, bicyclists and pedestrians. Follow these steps to avoid crashes:

1. Look for possible danger. Think about what might happen. If there are children playing by the road, plan what you will do if one runs or rides into the street.
2. Understand what can be done to prevent a crash. See the defensive driving tips which follow and the Handling Emergencies section later in this chapter.
3. Act in time. Once you have seen a dangerous situation, act right away to prevent a crash.

Use these defensive driving tips if you see that you are about to be involved in a crash:

- It is better to swerve right instead of toward oncoming traffic to prevent a crash.
- Hitting a row of bushes is better than hitting a tree, post or solid object.
- Hitting a vehicle moving in the same direction as you are is better than hitting a vehicle head-on.
- It is better to drive off the road than skid off when avoiding a crash.
- It is better to hit something that is not moving instead of a vehicle moving toward you.

5.4 - When You Back Up

Check behind your vehicle before you get in. Children or small objects cannot be seen from the driver's seat. Place your right arm on the back of the seat and turn around so that you can look directly through the rear window. Do not depend on your rearview or side mirrors as you cannot see directly behind your vehicle. Back slowly; your vehicle is much harder to steer while you are backing. Whenever possible use a person outside the vehicle to help you back up.

5.5 - Avoiding Rear-end Collisions

Many crashes happen because one vehicle runs into the back of another one. Here are some things you can do to lower the risk of someone running into the rear of your vehicle.

- Check your brake lights often to make sure they are clean and working properly.
- Know what is going on around you. Use your rearview mirrors.
- Signal well in advance for turns, stops and lane changes.
- Slow down gradually. Avoid any sudden actions.
- Drive with the flow of traffic (within the speed limit). Driving too slowly can be as dangerous as driving too fast.
- To avoid striking the vehicle in the front of you, keep at least two seconds following distance. This is accomplished by using the two-second rule. Information for the two-second rule is found under the section, **Minimum Safe Following Distances**.

5.6 - Basic Driver Improvement

Any driver can take a basic driver improvement course. The course teaches ways of keeping crashes from happening. One driver can sign up, or a group can request a class. Consult your yellow pages under **Driving Instruction** for the location nearest you.

5.7 - Safety Belts

The driver and front seat passengers must wear seat belts. The seat belt law applies to passenger cars manufactured beginning with the 1968 model year, and trucks beginning with the 1972 model year. It is unlawful for any person to operate a vehicle in this state unless every passenger of the vehicle under the age of 18 is restrained by a safety belt or by a child restraint device, regardless of seating position. A seat belt violation will be charged to the driver when a person under 18 is not restrained by a safety belt or a child restraint device. If the passenger is 18 years of age or older and fails to wear a seat belt when required by law, the passenger will be charged with the violation.



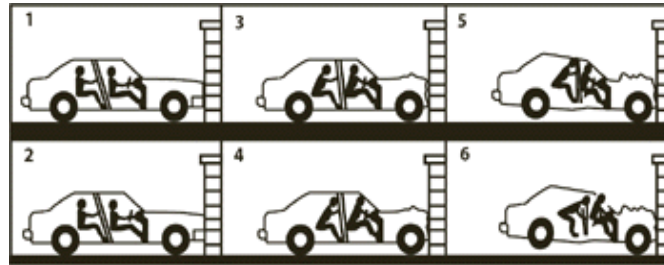
The law exempts the following from the seat belt requirements:

- Any person certified by a physician as having a medical condition that causes the seat belt use to be inappropriate or dangerous.
- Employee of a newspaper home delivery service while delivering newspapers on home delivery routes.
- School buses.
- Buses used for transportation of persons for compensation.
- Farm equipment.
- Trucks of a net weight of more than 26,000 pounds.
- Motorcycle, moped or bicycle.

In a crash, you are far more likely to be killed if you are not wearing a safety belt. Wearing shoulder belts and lap belts make your chances of living through a crash twice as good.

In a crash, safety belts:

- Keep you from being thrown from the vehicle. The risk of death is five times greater if you are thrown from a vehicle in a crash.
- Keep you from being thrown against others in the vehicle.
- Keep the driver behind the wheel, where he or she can control the vehicle.
- Keep you from being thrown against parts of your vehicle, such as the steering wheel or windshield.



Safety Belts Save Lives!

Wear a lap belt around your hips, not your stomach. Fasten the belt snugly. Wear a shoulder belt only with a lap belt. Don't just use your safety belt for long trips or high-speed highways. More than half of the crashes that cause injury or death happen at speeds less than 40 MPH and within 25 miles from home.

5.8 - Protecting Children

All Children 5 Years Of Age Or Younger Must Use A Restraint Device When Riding In A Motor Vehicle.

The number one killer of young children in the United States is traffic crashes in which children were not restrained at all. Over 90 percent of the deaths and 80 percent of the injuries in car crashes could be prevented by using crash-tested child restraints. Children should be secured in the rear seat. Never secure a child in the front passenger side, especially if your vehicle has an air bag. The law requires every driver to properly secure children five years of age or younger in child restraint devices riding in a passenger car, van, or pick-up truck, regardless of whether the vehicle is registered in this state. Infant carriers or children's car seats must be used for children up to three years of age and younger. For children aged 4 through 5 years, a separate carrier, an integrated child seat or a seat belt may be used. All infant carriers and car seats must be crash-tested and approved by the U.S. Government. Children being carried or riding bicycles should wear properly fitted bicycle helmets.

5.8.1 - What is the Best Child Seat?

- The one that fits your child.
- The one that fits your vehicle.
- The one that you will use correctly every time.

For more information on the best child seat, please visit:

www.fhp.state.fl.us/CPS and obtain information on Occupant Protection & Child Passenger Safety News.

5.8.2 - Leaving Children Unattended or Unsupervised in Motor Vehicles

Do not leave children unattended or unsupervised in a motor vehicle and never leave a child unattended for any period of time if the motor vehicle is running or if the health of the child is in danger.

WARNING: DO NOT LEAVE CHILDREN UNATTENDED; ESPECIALLY WHEN IT IS HOT OUTSIDE!

On a hot summer day, the interior of a car can get dangerously hot. One study found that with the windows up and the temperature outside at 94 degrees, the inside of a car could be 122 degrees in just half an hour, or 132 degrees after an hour.

5.9 - Speed Limits

Speed causes many crashes. More drivers are convicted of speeding than any other offense. To avoid being fined or involved in a crash, obey the speed limits. Speed is very important in a collision. If you double the speed of a car, you increase its force of impact four times. If you triple the speed, the impact is nine times as great.

70 Does Not Always Mean 70

Remember that speed limits show the fastest speed you may drive under good conditions. You are responsible for adjusting your driving speed to the road conditions. For example, if the weather is bad or there is a lot of traffic, you must drive more slowly than the posted speed. The safe speed is the one that allows you to have complete control of your vehicle and avoid collisions with other vehicles and pedestrians.

Florida "Standard" Speed Limits

Municipal Speed Areas	30
Business or Residential Area	30
Rural Interstate	70*
Limited Access Highways	70
All Other Roads and Highways	55*
School Zones	20

*The 55 MPH maximum speed limit is still in effect in Florida except where otherwise posted. *Speed limits are 70 MPH on **some** rural Interstate highways. Speed limits may be changed on other multi-lane highways and in areas where the conditions require lower speeds. Drivers should not assume because the area appears to be a particular urban, municipality, business or highway area that the speed is the standard or expected speed zone. Observe and obey the posted speed signs as there may be frequent changes from area to area along the selected roads or highways.

Speed limit signs are posted at the beginning of a speed zone and drivers must be driving at that speed starting at the location of the posted sign and continuing until there is a posted speed limit change.

5.9.1 - Driving Too Slowly is also Against the Law

Drive with the flow of traffic (within the speed limit). You should not drive so slowly that you block other vehicles moving at normal, safe speeds. When driving slower than the flow of traffic, keep right so others may safely pass. You can be issued a ticket for driving too slowly. When the posted speed limit is 70 mph, the minimum speed limit is 50 mph.

5.10 - Following Officer's and Fireman's Instructions

If you are stopped by a law enforcement officer, pull off immediately to the extreme right, clear of traffic when possible. Turn off your engine. Reduce your headlights to the parking light position at night. Sit calmly and follow the instructions of the officer. You must follow any lawful order or direction of (1) any law enforcement officer or (2) any fireman at the scene of a fire who is directing traffic. If a law enforcement officer is directing traffic where there are signal lights, obey the officer - not the signals.

5.11 - Crossing Intersections

More crashes happen at intersections than any other place. Be very careful when approaching any intersection or driveway.

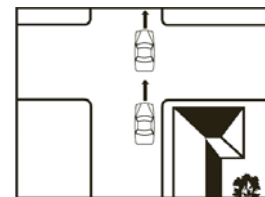
- Look both ways and be ready to brake or stop.
- Drive at the slowest speed just before entering the intersection, not while crossing.
- Do not pass or change lanes.
- Be aware of vehicles behind you. Will they be able to stop if necessary? If you are stopped, look for bicyclists and pedestrians who may be crossing the intersection from either direction or motorists on the cross street who may be passing a bicycle or other vehicle and be in the opposing lane.

5.12 - Right-of-Way

Who has the right-of-way in Florida? The answer is no one! The law only says who must yield (give up) the right-of-way. Every driver, motorcyclist, moped rider, bicyclist and pedestrian must do everything possible to avoid a crash.

5.13 - Stop Signs

After a complete stop, you must yield the right-of-way to all other traffic and pedestrians at stop signs. Move forward only when the road is clear. At four-way stops, the first vehicle to stop should move forward first. If two vehicles reach the intersection at the same time, the driver on the left yields to the driver on the right.



5.14 - Open Intersections

An open intersection is one without traffic control signs or signals. When you enter one, you must yield the right-of-way if:

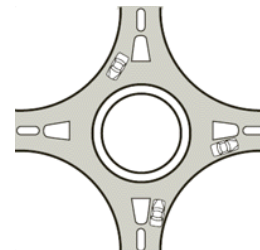
- A vehicle is already in the intersection.
- You enter or cross a state highway from a secondary road.

- You enter a paved road from an unpaved road.
- You plan to make a left turn and a vehicle is approaching from the opposite direction.

When two cars enter an open intersection at the same time, the driver on the left must yield to the driver on the right.

5.15 - Roundabouts

Roundabouts are a circular intersection with no traffic signal which improve traffic flow and reduce traffic crashes. Roundabouts slow vehicle speed, give drivers more time to judge and react to other vehicles or pedestrians. Drivers entering the roundabout must yield to traffic already in the circle and are directed in one-way, counterclockwise direction. For multi-lane roundabouts, stay in the left lane to turn left and the right lane to turn right, and all lanes to go through, unless otherwise directed by signs or pavement markings. Stay in your lane within the roundabout and use your right turn signal to indicate your intention to exit.



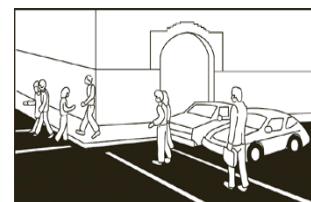
Prior to entering or exiting the roundabout, drivers must yield to pedestrians in the crosswalks. Bicyclists may take the lane in the roundabout, or use the sidewalk.

5.16 - Pedestrians

It is the motorist's responsibility to do everything possible to avoid colliding with pedestrians. Bicyclists, skaters and skateboarders in a crosswalk or driveway are considered pedestrians. Turning motorists must stop for pedestrians at intersections and driveways. Motorists must stop or yield as appropriate for pedestrians crossing the street or driveway at any marked mid-block crossing, driveway or intersection without traffic signals.

5.16.1 - Safety Rules for Pedestrians

1. Look to the left, right, and left for traffic before stepping off any curb.
2. Crosswalks at intersections may be marked or unmarked. Crossing is preferred at intersections or designated crosswalks in the middle of a block. However, pedestrians may cross at other locations if not between adjacent signalized intersections but are required to yield to other traffic.
3. Cross with the green light, "WALK" or "walking man" symbol. Make sure you have enough time to cross. Many locations in Florida have "count-down" pedestrian signals. These indicate the time remaining for the crossing.
4. While walking along a highway, always walk on the shoulder on the left side, facing traffic. Wear reflective and light colored clothing or use a flashlight to make you more visible to drivers at night.



5.16.2 - Persons Who are Blind

The primary traveling aids for a person who is blind are often a white cane or a trained guide dog. Independent travel involves some risk that can be greatly reduced when you, the driver, are aware of the use and meaning of a white cane or guide dog.



Drivers must always yield the right-of-way to persons who are blind. When a pedestrian is crossing a street or highway guided by a dog or carrying a white cane (or a white cane with a red tip), **vehicles must come to a complete stop.**

5.16.3 - Mobility-Impaired Persons

Drivers must yield the right-of-way to mobility-impaired persons and pedestrians utilizing the assistance of a guide dog or service animal. When a pedestrian is crossing a public street or highway and the pedestrian is using a walker, a crutch, or an orthopedic cane or wheelchair, **vehicles must come to a complete stop.**

5.17 - Bicyclists

In Florida, the bicycle is legally defined as a vehicle. Bicyclists using a public roadway are considered operators of motor vehicles and are responsible for observing traffic laws. Bicyclists may generally operate legally on sidewalks (except by local ordinance). They may operate in either direction, though riding against the flow of traffic on the adjacent roadway places them where motorists are not expecting traffic. Generally, sidewalk bicycling is not recommended, due to the usual increase in conflicts with bicycles and motor vehicles at driveways and intersections.

5.17.1 - Bike Lanes at Intersections

Slow down, look for and yield to any bicyclists in the bike lane. Signal your turn prior to crossing through the bike lane at the dashed striping. Yield to any bicyclist. Complete the turn from the designated right turn lane. If there is no right turn lane, after first checking to make sure that no bicyclists are present, you may merge into the bike lane at approaches to the intersection or driveway.

5.17.2 - Sharing the Road with a Bicycle

- Allow a minimum of three feet of clearance when passing a cyclist and reduce your speed. On a two lane road, time your pass to not be next to the bicyclist at the same time as oncoming traffic is at the same location.
- At night, avoid using high beam headlights when a cyclist is approaching. The cyclist could be temporarily blinded.
- Do not follow a cyclist closely. If you are too close and the cyclist must slow suddenly in an emergency, you could run them over. Bicyclists are entitled to move away from the right side of a lane when that lane is too narrow to safely share with a motor vehicle. Most travel lanes in Florida range from 10' to 12' wide and guidance indicates that a 14' lane is a width that allows safe sharing with most motor vehicles. Wet roads impair a bicyclist's ability to brake and maneuver. Potholes or railroad tracks often require bicyclists to change positions within their lane. When railroad tracks are skewed, the bicyclist must change directions in order to cross over the tracks at a ninety-degree angle or risk a fall.

5.18 -Motorcycle Awareness

According to the Hurt Study (the most comprehensive motorcycle safety study to date), "The failure of motorists to detect and recognize motorcycles in traffic is the predominating cause of motorcycle accidents.

As of July 1, 2010, there were 1,009,803 motorcycle endorsements in the State of Florida. That's almost a million bikes on the road! Please take a second to "look twice ... save a life."

5.18.1 - Sharing the Road with a Motorcycle

- Watch for motorcycles and always yield the right-of-way.
- Look at least three times before pulling into an intersection or changing lanes and be aware that even the smallest of visual impairments can hide a motorcycle from view.
- When following a motorcycle, remember that motorcycles have the ability of stopping much more quickly than other vehicles. Following too closely endangers your life and that of the motorcyclist.
- Never attempt to share the lane with a motorcycle. The motorcyclist needs the room to maneuver safely and is entitled to the entire lane.
- Never pass a motorcyclist with only a few feet of space. The force of the buffeted wind can cause the rider to lose control. Motorcyclists may also choose to ride near one side of a lane to maximize the view ahead.
- When your vehicle is being passed by a motorcycle, maintain your lane position and speed. Allow the motorcycle to complete the maneuver and assume proper lane position.
- It is especially difficult to gauge the speed of a motorcycle because they take up less of your field of vision, making depth perception more difficult. They may appear to be much farther away than they really are. Be sure of their distance when making a maneuver in front of a motorcycle.
- Motorcyclists often slow down by downshifting or rolling off the throttle, thus not activating the brake light. Predict a motorcyclist may slow down without visual warning.
- Maintain a four second buffer zone between you and a motorcyclist, more in bad weather.
- In traffic, especially in inclement weather or under certain road conditions, motorcycles operate differently than other vehicles. Wind gusts can move a motorcycle across an entire lane. Wet or icy roads impair a motorcyclist's ability to brake and maneuver. Potholes or railroad tracks often require motorcyclists to change positions within their lane. Gravel roads decrease traction and may cause a rider to slow down or brake where a car would not. Give the motorcycle extra space when encountering these conditions.

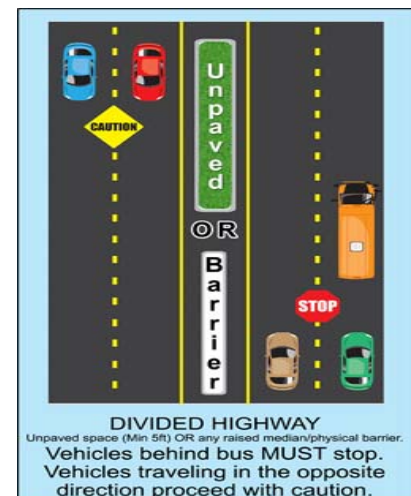
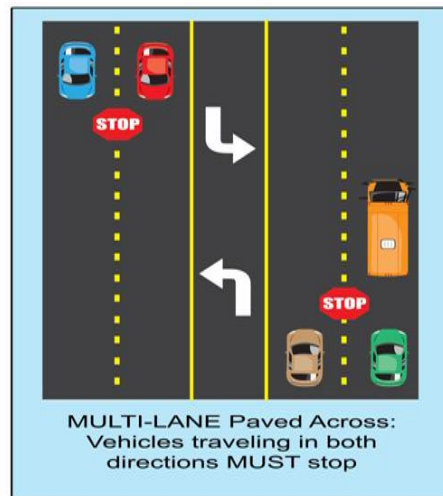
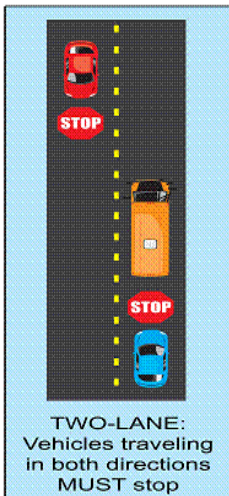
5.19 - School Buses

On a two way street or highway, all drivers moving in either direction must stop for a stopped school bus which is picking up or dropping off children. You must remain stopped until all children are clear of the roadway and the bus' stop arm is withdrawn.



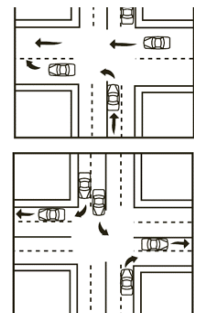
If the highway is divided by a raised barrier or an unpaved median at least five feet wide, you do not have to stop if you are moving in the opposite direction of the bus. Painted lines or pavement markings are not considered barriers. You must always stop if you are moving in the same direction as the bus and you must remain stopped until the bus stop arm is withdrawn.

Any person using, operating, or driving a vehicle that passes a school bus on the side that children enter and exit when the school bus displays a stopped signal commits a moving violation and will be required to complete a basic driver improvement course.



5.19.1 - School Crossings

School zones help protect the safety of students when they cross the roadway. Schools crosswalks help inform drivers that children use that crossing to go to and from school. Be attentive to school zone speed limits, school crossing guards, and unpredictable children, since these situations may require you to reduce your speed or stop.



When children (walking, bicycling or skating) or school crossing guards are present in a crosswalk, drivers must yield or stop at the marked stop line and without stopping in the crosswalk. It is the driver's responsibility to avoid colliding with pedestrians. Do your part to make every school crossing a safe crossing for children.

5.20 - Public Transit

All drivers should yield the right-of-way to public transit buses traveling in the same direction which have signaled and are reentering the traffic flow from a specifically designated pullout bay.

5.21 - Funeral Processions

Pedestrians and drivers must yield the right-of-way to funeral processions. When the first vehicle in the funeral processions lawfully enters an intersection, other vehicles in the procession must have their headlights on as a signal to other drivers not to drive between or interfere with the procession while it is in motion, unless directed to do so by a law enforcement officer.

5.22 - Driveways

Drivers entering and exiting a road from a driveway, alley or roadside should yield to vehicles already on the main road and bicyclists and pedestrians on the sidewalk, shared use path or bike lanes.

5.23 - Emergency Vehicles

Pedestrians and drivers must yield the right-of-way to law enforcement vehicles, fire engines and other emergency vehicles using sirens and/or flashing lights. Pull over to the closest edge of the roadway immediately and stop until the emergency vehicle has passed. Do not block intersections.

5.23.1 - Move Over

(See the Move Over Law Section in the front of this handbook)

5.24 - Making Turns

Turning a corner may seem to be a simple operation, but many traffic crashes are caused by drivers who do not turn correctly.

There are nine steps in making a good turn:

1. Make up your mind about your turn before you get to the turning point. Turn signals are required when changing lanes. Never make "last minute" turns.
2. If you must change lanes, look behind and to both sides to see where other vehicles are located before making your turn.
3. Move into the correct lane as you near the intersection. The correct lane for the right turn is the lane next to the right edge of the roadway.4. On a two-lane road with traffic in both directions, an approach for a left turn should be made in the part of the right half of the roadway nearest the center line.
4. Give a turn signal for at least the last 100 feet before you make your turn. Let other drivers know what you are going to do. **Be sure that the drivers around you have time to see your signal before you move.**
5. Slow down to a safe turning speed.
6. When you are slowing to make a right turn, the bicyclist you passed may be catching up to you. Search over your shoulder before turning. Yield to bicyclists and pedestrians.
7. Yield to pedestrians who may be crossing your path when turning left. Always scan for pedestrians before starting the turn.
8. Make the turn, staying in the proper lane. Yield the right-of-way to vehicles (including bicycles) coming from the opposite direction **or vehicles lawfully passing on the left.**
9. Finish your turn in the proper lane. A right turn should be from the right lane into the right lane of the roadway entered. A left turn may be completed in any lane lawfully available, or safe, for the desired direction of travel. See the diagrams for making left turns from or into one-way streets.

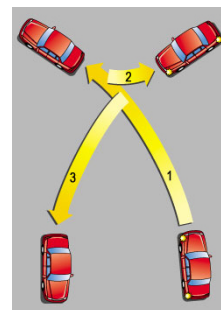
If you reach an intersection where you wish to make a right or left turn and are not in the proper lane, you should drive to the next intersection. Then make the turn from the proper lane.

5.25 - Turnabout (Three-Point Turn)

Sometimes you will need to turn your car around in a very small space. Use a three-point turn only if the road is too narrow for a U-turn and you can't go around the block. To make a three-point turn:

1. Move as far right as possible, check traffic, and signal a left turn.
2. Turn the steering wheel sharply to the left and move forward slowly. Stop at the curb, or edge of roadway.
3. Shift to reverse, turn your wheels sharply to the right, check traffic, and back your vehicle to the right curb, or edge of roadway.

You can now move in the opposite direction. Check the traffic and move forward. Never make a three-point turn or a U-turn on a curve, a hill or when a sign indicates that making a U-turn is prohibited.



5.26 - Turn Signals and Emergency Signals

You must use hand signals or directional signals to show that you are about to turn. Turn signals are required by law when changing lanes or overtaking a vehicle. You should use your turn signals to indicate your intention with sufficient time to allow other drivers around you to see your signal BEFORE you move. It is against the law to use your directional signals to tell drivers behind you that they can pass. Four-way emergency flashers should only be used while your vehicle is legally stopped or disabled on the highway or shoulder.



Right turn



Slow or stop



Left turn

5.27 - Traffic Lanes

Always drive on the right side of a two-lane highway except when passing. If the road has four or more lanes with two-way traffic, drive in the right lanes except when overtaking and passing. Left lanes on some interstate roads are reserved for car pool vehicles with two or more occupants in the car - watch for diamond signs in the median. The center lane of a three-lane or five-lane highway is used only for turning left.

If you see red reflectors facing you on the lane lines, you are on the wrong side of the road. Get into the proper lane immediately! If you see red reflectors on the lines on the edge of the road, you are on the wrong freeway ramp. Pull over immediately! Red reflectors always mean you are facing traffic the wrong way and could have a head-on collision.

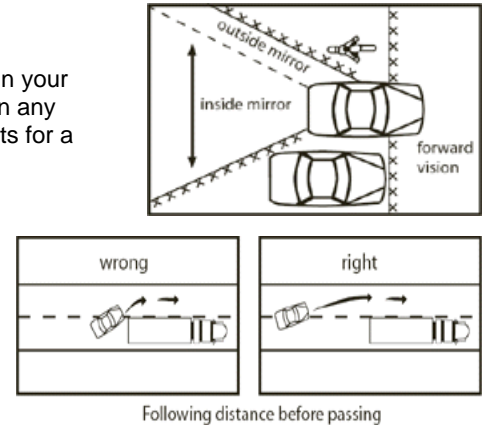
5.28 - Blind Spots

Blind spots are areas near the left and right rear corners of your vehicle that you cannot see in your rearview mirrors. Before you move sideways to change lanes on an expressway or to pass on any road, turn your head to make sure these areas are clear. Areas bordered by Xs are blind spots for a car with an outside mirror on the left side only.

On the roads with more than one lane in each direction, do not drive in someone else's blind spot. Speed up or drop back so the other driver can see you.

5.29 - Passing

- Stay a safe distance behind the vehicle you want to pass. The closer you get to the vehicle you want to pass, the less you can see ahead. This is especially true when passing trucks, trailers, and other large vehicles.
- Before you pull out to pass, check your blind spots and make sure that you have plenty of time and room to pass.
- On a two-lane road, tap your horn, or at night blink your headlights to let the other driver know you are passing.
- Give your signal before you move into the left lane. Turn signals are required when changing lanes. Be sure that the drivers around you have time to see your signal BEFORE you move.
- Do not return to the right side of the road until you can see the tires of the vehicle you passed in your rearview mirror.
- You must return to the right side of the road before coming within 200 feet of any vehicle coming from the opposite direction.
- Passing on the right is only legal when there are two or more lanes of traffic moving in the same direction or the vehicle you are passing is making a left turn. Pulling off the roadway to pass on the right is against the law.



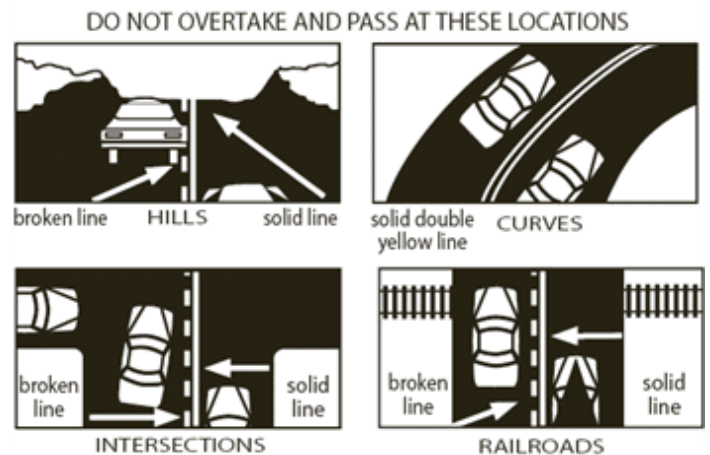
5.29.1 - Being Passed

- The driver of the car being passed **must not increase speed** until the pass is complete.
- Help other drivers pass you safely. Move to the right side of your lane to give them more room and a better view of the road ahead.

5.29.2 - When You May Not Pass

You may not pass on a two-lane road with traffic moving in opposite directions under these conditions:

- Where you see a **"DO NOT PASS"** or **"NO PASSING ZONE"** sign. The prohibition of passing in a no-passing zone does not apply when an obstruction exists making it necessary to drive to the left of the center of the highway [s 316.0875(3) F.S.]. Thus, when a cyclist is traveling so slowly as to constitute an "obstruction," a motorist may cross the center line in a no-passing zone if the way is clear to do so, i.e., when it can be seen that oncoming traffic is far enough away the pass may be completed before coming within 200 feet of an oncoming vehicle.
- Where a solid yellow line is painted on your side of the center line.
- On hills or curves, and at intersections.
- Within 100 feet of a bridge, viaduct, tunnel, or railroad crossing. Violators may be arrested or issued a ticket.



5.30 - Minimum Safe Following Distances

Leave plenty of space between you and the vehicle ahead, including bicycles. If it stops quickly, you will need time to see the danger and stop.

5.30.1 - Using the Two-Second Rule

At any speed, you can use the two-second rule to see if you are far enough behind the car in front of you:

- Watch the vehicle ahead pass some fixed point - an overpass, sign, fence corner, or other marker.
- Count off the seconds it takes you to reach the same spot in the road ("one thousand and one, one thousand and two...").

- If you reach the mark before you finish counting, you are following too closely. Slow down and check your following distance again.

The two-second rule applies to any speed in good weather and road conditions. If road or weather conditions are not good, double your following distance. You should also double your following distance when driving a motor home or towing a trailer.

5.30.2 - Following Distance For Trucks

A truck or any vehicle towing another vehicle may not follow within 300 feet of another truck or vehicle towing a vehicle. This law does not apply to overtaking and passing, and it does not apply within cities or towns.

5.31 - Parking

When parking on a public road, move as far away from traffic as possible. If there is a roadside shoulder, pull as far onto it as you can. If there is a curb, pull close to it - you must not park more than one foot away.

Always park on the right side of the roadway, unless it is a one-way street. Make sure your vehicle cannot move. Set the parking brake and shift to park with an automatic transmission or reverse with a manual transmission. Turn off the engine and lock the vehicle. Florida law requires that you take the keys out of your vehicle before leaving it. Always check traffic behind you before getting out, or get out on the curb side. Before you leave any parked position, look over your shoulder to the rear to make sure the way is clear. Give the proper turn signal if driving from a curb and yield to other traffic.



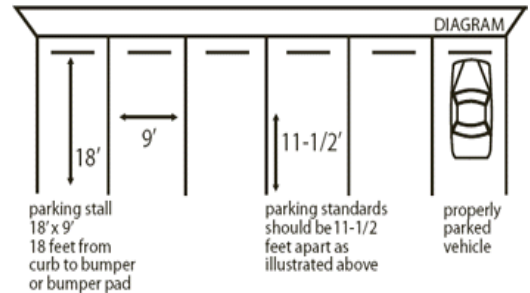
5.31.1 - Parking on Hills

When parking on hills:

- Turn your wheels so that if your car starts to move, it will roll away from traffic or into the curb. Study the diagram provided.
- Set the parking brake.
- Place automatic gear shift in park. Shift manual gears to reverse (downhill) or first (uphill).
- Turn vehicle off.

5.31.2 - Straight-in Parking

The rear markers represent the REAR corners of the parking space. The forward markers represent the approximate CENTER of the parking space. When properly parked, the vehicle should be centered inside the space with no part of the vehicle extending out into the traffic lane.



5.31.3 - Where Parking is not Allowed

- On the roadway side of another parked vehicle (double parking).
- On crosswalks.
- On sidewalks.
- In front of driveways.
- By curbs painted yellow or where "No Parking" signs are posted.
- Within intersections.
- Within 15 feet of a fire hydrant.
- Within 20 feet of an intersection.
- Within 20 feet of the entrance to a fire, ambulance or rescue squad station.
- Within 50 feet of a railroad crossing.
- On the hard surface of a highway where parking spaces are not marked.
- On any bridge or overpass or in any tunnel.
- Within 30 feet of a rural mail box on a state highway between 8 a.m. and 6 p.m.
- Within 30 feet of any flashing signal, stop sign or traffic signal.
- In such a way that you block or create a hazard for other vehicles.



5.31.4 - Parking Lights

Parking lights must be used at night on any vehicle parked on a roadway or shoulder outside of cities and towns. Driving with parking lights only (in place of headlights) is against the law.

5.31.5 - Parking Privileges for Persons with Mobility Impairments

Persons with mobility impairments do not have to pay parking fees on any public street, highway, or metered space and may park in spaces reserved for person with disabilities. To park in these designated spaces a person needs to obtain a parking placard or obtain a specialty license plates authorized to park in the reserved spaces.

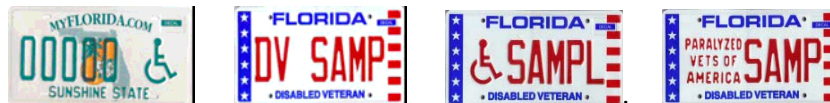
Parking Placards

Vehicles must display a valid parking placard which is visible from the front and rear of the vehicle. Each side of the placard must have the international symbol of accessibility in a contrasting color in the center. The placards may be obtained from a tag agent or Tax Collector's office and must be renewed every four years.

1. Proof of Eligibility: Statement from a physician licensed in the United States, the Division of Blind Services of the Department of Education, or the Veterans Administration, that the applicant is a severely physically disabled individual with permanent mobility problems which substantially impair his or her ability to ambulate or is certified as legally blind.
2. Display: Visible from the front and rear of the vehicle.
3. Procedure: Contact your local county tax collector or tag agent.
 - a. Complete HSMV 83039 - Application for a disabled person's parking permit.
 - b. Provide proof of eligibility - Doctor's Statement.
 - c. Application for permanent disabled parking permit is no fee - blue.
 - d. Pay \$15 for temporary disabled person parking permit - red.
 - e. Present valid Florida driver license or identification card if one was issued and available.



Vehicles with Specialty License Plates that display the ISA Symbol may legally park in spaces reserved for people with Disabilities. Disabled American Veterans (DAV) and Paralyzed Veterans of America (PVA) plates are not required to have the ISA Symbol. The ISA Symbol is optional:



Parking reserved for people with disabilities is a Federal and State legal requirement. Accessible parking spaces allow motorists with disabilities safe and equal access to goods and services. It is illegal for any vehicle to park, stop, or stand in these spaces unless it displays a Parking Permit, a Specialty License Plate with the ISA symbol issued by the Florida DMV, or a similar permit or plate issued by another state. In addition, the vehicle must actually be transporting the person with the disability who owns the permit or registration. Law enforcement officers are authorized to request proof of ownership of the Parking Permit identification card or a vehicle with a Specialty ISA License Plate. Do not loan your Parking Permit. Anyone who obtains or uses a permit that does not belong to them can be charged with a second degree misdemeanor, punishable by a \$500 fine or up to 6 months in jail, and the illegally parked vehicle can be towed and the permit confiscated.

5.32 - Expressway Driving

Expressways - also called interstate highways, freeways, and turnpikes are multiple-lane roads with no stop signs, traffic lights, or railroad crossings. For these reasons, expressways can give you a fast, safe way to get where you need to go.

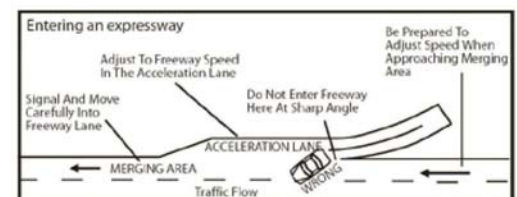
Pedestrians, hitchhikers, bicycles, animal-drawn vehicles or motor-driven cycles and motor scooters with 150 cubic centimeter displacement or less are not allowed on expressways.

5.32.1 - Entering and Leaving Expressways

Vehicles can enter and leave expressways only at certain points. Because expressway traffic is usually moving at or close to the maximum speed allowed, you need to know how to enter and exit safely.

All expressway entrances have three basic parts: an entrance ramp, an acceleration lane, and a merging area. Follow these guidelines to enter an expressway safely:

- On the entrance ramp, begin checking for an opening in traffic. Signal for your turn.
- As the ramp straightens into the acceleration lane, speed up. Try to adjust your speed so that you can move into the traffic when you reach the end of the acceleration lane.
- Merge into traffic when you can do so safely. You must yield the right-of-way to traffic on the expressway. You cannot always count on other drivers moving over to give you room to enter, but do not stop on an acceleration lane unless traffic is too heavy and there is no space for you to enter safely.



When leaving an expressway:

- Get into the exit lane. Posted signs will tell you which one. Most expressway exits are from the right lane.
- Signal your intention to leave the expressway by using your turn signal.
- Slow down as soon as you are off the expressway. Check the posted safe speed for the exit ramp.
- Do not make last-minute turns into an exit. If you go past your exit, you must go to the next one.

5.32.2 - Expressway Safety Reminders

- Plan your trip. Know just where you will get on and get off.
- Drive in the right lane and pass on the left. If there are three lanes, use the right lane for lower speed driving, the left for passing. If you stay in the right lane, watch for cars entering the expressway. Adjust your speed or move into the center lane so they can enter safely.
- Never stop on the pavement, shoulder, or connecting ramp of an expressway except in an emergency. If your vehicle breaks down, it may

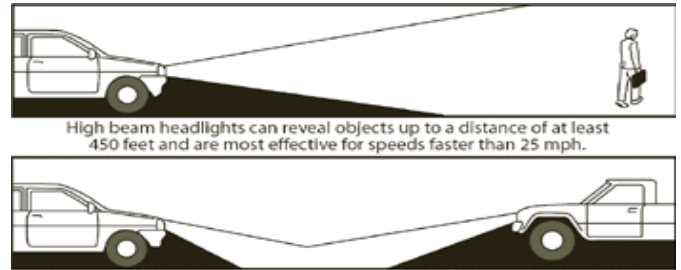
be parked on the side of the expressway (completely off the pavement) for no more than six hours. Raise your hood and tie a white cloth to your antenna or left door handle to show you need help.

- Never back up on an expressway entrance ramp or exit ramp. The only exception to this would be if you are trying to enter an expressway through an exit. In this case, you would see a “WRONG WAY” or “DO NOT ENTER” sign. Then you must back up or turn around.
- Do not cross, drive on or park on the median strip.
- Do not follow too closely. Rear end collisions are the greatest danger on expressways. Always leave room for emergency stops.
- Stop driving when you feel tired. On long trips the hum of the engine and your lack of movement can make you feel sleepy. Stop for a cup of coffee, a short walk, or a nap. Do not risk falling asleep at the wheel.

5.33 - Night Driving

You will need to drive with extra care at night. You cannot see as far ahead or to the side, and glare from oncoming cars can reduce your vision even more. Follow these guidelines for driving at night:

- Use your headlights (low beam or high beam) between the hours of **sunset and sunrise**.
- Low beam headlamps are only effective for speeds up to 20-25 MPH. You must use special care when driving faster than these speeds, since you are unable to detect pedestrians, bicyclists and others.
- High beam headlights can reveal objects up to a distance of at least 450 feet and are most effective for speeds faster than 25 MPH.
- Don't use high-beam headlights within **500 feet of oncoming vehicles**.
- If you are behind other vehicles, use low beams when you are within 300 feet of the vehicle ahead.
- When leaving a brightly lit place, drive slowly until your eyes adjust to the darkness.
- Don't look directly at oncoming headlights. Instead, watch the right edge of your lane. Look quickly to be sure of the other vehicle's position every few seconds.
- Drive as far to the right as you can if a vehicle with one light comes toward you.



5.34 - Animals

Wild and domestic animals may move unpredictably towards or across the travel path of an approaching motor vehicle. When an animal is seen in the road or on the road shoulder, you should slow down and, if necessary, yield the right-of-way. Be especially careful in rural areas at night. Often an animal's eyes shining in the headlight beams will be seen first. Use reasonable care when approaching a person who is riding or leading an animal on the roadway or shoulder of the road. Horses have poor side vision and are easily frightened by loud noises or sudden movements.

5.35 - Reduced Visibility

You must turn on your low beam (dim) headlights when driving between sunset and sunrise, including the twilight hours between sunset and sunrise or between full night and sunrise. You must also use these lights during any rain, smoke or fog. Parking lights do not meet requirements of this law.

5.35.1 - Fog or Smoke

It is best not to drive in fog or smoke. If you must, slow down, turn on your low beam headlights, and be ready for a fast stop. Use windshield wipers in heavy fog. If the fog or smoke becomes so thick that you cannot see well enough to keep driving, pull all the way off the pavement and stop. Turn on your emergency flashers.

5.35.2 - Rain

The first few drops of rain mean danger. Roads are most slippery just after the rain begins because oil dropped from cars has not been washed away. Slow down and plan for at least two times the normal stopping distance.

In a heavy rain, your tires can ride on a thin film of water, like skis. This is called hydroplaning. When your tires are not touching the road, you can easily lose control and skid. Keep your tires on the road by slowing down when it rains, and by having tires with the right air pressure and good tread.

Brakes often become wet after driving through deep water or driving in heavy rain. They may pull to one side or the other, or they may not hold at all. If this happens, slow down and gently push on the brake pedal until your brakes are working again.

5.36 - Handling Emergencies

When you are driving, things can happen very quickly. You may have only a fraction of a second to make the right move. Follow these guidelines for handling emergencies.

5.36.1 - Breakdowns

- If possible, park where the disabled vehicle can be seen for 200 feet in each direction.
- Move the vehicle so all four wheels are off the pavement.
- Turn on your emergency flashers.
- Get all passengers out on the side away from traffic.
- Tie a white cloth on the left door handle or antenna.
- Raise the hood.

5.36.2 - Tire Blowout

- Do not use brakes.
- Concentrate on steering.
- Slow down gradually.
- Brake softly when the car is under control.
- Pull completely off the pavement.

5.36.3 - Wet Brakes

- Test brakes lightly after driving through deep water.
- Brakes may pull to one side or may not hold at all.
- Dry brakes by driving slowly in low gear and applying brakes.

5.36.4 - Right Wheels off Pavement

- Take your foot off the gas pedal.
- Hold the wheel firmly and steer in a straight line.
- Brake lightly.
- Wait until the road is clear.
- Turn back on the pavement sharply at slow speed.

5.36.5 - Car or Motorcycle Approaching in your Lane

- Sound your horn.
- Brake sharply.
- Steer for the side of the road or the ditch.

5.36.6 - Jammed Gas Pedal

- Keep your eyes on the road.
- Tap the gas pedal with your foot.
- Try to pry the pedal up with the toe of your shoe.
- Shift into neutral.
- Turn off the ignition. (Do not turn the key to lock, or your steering will lock.)
- Use your brakes.

5.36.7 - Brake Failure

- Pump the brake pedal hard and fast, except for vehicles with anti-lock brakes.
- Shift to a lower gear.
- Apply the parking brake slowly and make sure that you are holding down the release lever or button. This will prevent your rear wheels from locking and your vehicle from skidding.
- Rub your tires on the curb to slow your vehicle, or pull off the road into an open space.

5.36.8 - Skidding

- Take your foot off the gas pedal.
- Do not use your brakes, if possible.
- Pump the brakes gently if you are about to hit something.
- Steer the car into the direction of the skid to straighten the vehicle out. Then steer in the direction you wish to go.

5.36.9 - Fire

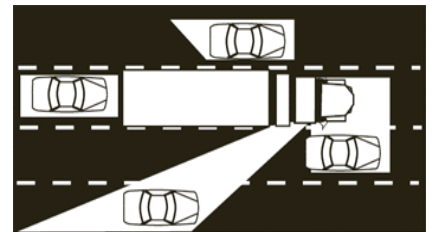
- If the fire is small and you have a portable extinguisher, you should attempt to extinguish the fire.
- If you cannot extinguish the fire and it continues to get larger, get away from the vehicle, due to the presence of toxic fumes and the possibility of explosion.
- Never apply water to a gasoline or diesel fire.

5.37 - Sharing the Road with a Truck

Whether you are sharing the road with a car, truck, bus, or other large vehicle, it's important for safety's sake to obey traffic laws, abide by the rules of the road, and drive defensively. Are there any special rules for sharing the road with a truck? Yes! Here are some suggestions from professional truck drivers.

5.37.1 - The "No-Zone"

- **Blind Spots.** Although most large vehicles have several rearview mirrors, it is easy for a car, motorcycle or bicycle to be hidden in a large vehicle's blind spot. Do not follow closely behind a truck or a bus. When driving near a large vehicle, be aware of the driver's blind spots on the right, left, front and behind.
- **Rear Blind Spots.** Unlike passenger cars, trucks and buses have deep blind spots directly behind them. Tailgating greatly increases your chances of a rear-end collision with a commercial vehicle.
- **Unsafe Passing.** Another "No Zone" is just in front of trucks and buses. When passing a bus or truck, be sure you can see the cab in your rearview mirror before pulling in front.
- **Wide Right Turns.** Truck and bus drivers sometimes need to swing wide to the left in order to safely negotiate a right turn. They cannot see cars directly behind or beside them. Cutting in between the commercial vehicle and the curb or shoulder to the right increases the possibility



of a crash.

- **Backing Up.** When a truck is backing up, it sometimes must block the street to maneuver its trailer accurately. Never cross behind a truck that is preparing to back up or is in the process of doing so. Remember, most trailers are eight and a half feet wide and can completely hide objects that suddenly come between them and loading areas. Automobile drivers attempting to pass behind a truck enter a blind spot for both drivers.

5.37.2 - Passing

- When passing a truck, first check to your front and rear, and move into the passing lane only if it is clear and you are in a legal passing zone. Let the truck driver know you are passing by blinking your headlights, especially at night. The driver will make it easier for you by staying to the far side of the lane.
- On a level highway, it takes only three to five seconds longer to pass a truck than a car. On an upgrade, a truck often loses speed, so it is easier to pass than a car. On a downgrade, the truck's momentum will cause it to go faster, so you may need to increase your speed.
- Complete your pass as quickly as possible, and don't stay alongside the other vehicle.
- If the driver blinks his lights after you pass, it's a signal that it is clear to pull back in. Be sure to move back only when you can see the front of the truck in your rear-view mirror. After you pass a truck, maintain your speed.
- When a truck passes you, you can help the truck driver by keeping to the far side of your lane. You'll make it easier for the truck driver if you reduce your speed slightly. In any event, do not speed up while the truck is passing. After passing, the truck driver will signal to let you know that the truck will be returning to your lane.
- When you meet a truck coming from the opposite direction, keep as far as possible to the side to avoid a sideswipe crash and to reduce the wind turbulence between the two vehicles. Remember that turbulence pushes the vehicles apart; it does not draw them together.

5.37.3 - Following a Truck

- In general, trucks take slightly longer than cars to stop because of their size. However, at highway speeds or on wet roads, trucks may have better traction and stability allowing them to stop more quickly. A car following too closely may not be able to stop quickly enough to avoid rear-ending the truck.
- If you are following a truck, stay out of its "blind spot" to the rear. Avoid following too closely and position your vehicle so the truck driver can see it in his side mirrors. Then you will have a good view of the road ahead, and the truck driver can give you plenty of warning for a stop or a turn. You will have more time to react and make a safe stop.
- When you follow a truck at night, always dim your headlights. Bright lights from a vehicle behind will blind the truck driver when they reflect off the truck's large side mirrors.
- If you are stopped behind a truck on an upgrade, leave space in case the truck drifts back slightly when it starts to move. Also, keep to the left in your lane so the driver can see that you're stopped behind the truck.

5.38 - First Aid

If you come upon an accident, send someone for help. Then apply the three first aid rules:

5.38.1 - Start the Breathing

If the injured person has stopped breathing, start artificial respiration right away. Do not stop until a doctor tells you to stop, or until the victim is breathing normally.

Follow these steps:

- Use your fingers to clear the victim's mouth.
- Place the victim on his or her back, lift the neck, and tilt the head back.
- Hold the victim's nose tightly and blow vigorously through the mouth to make the chest expand once every five seconds (twelve times a minute).
- When the injured person is a small child, do not pinch the nose. Cover the child's nose and mouth with your mouth and blow smaller more frequent breaths, about (20 per minute).

5.38.2 - Stop the Bleeding

Most bleeding can be stopped by pressing down on the wound. If possible you should place a gauze pad over the wound and then press down. If you do not have a gauze pad, a clean cloth or even your fingers will have to be used. Bleeding from an artery should always be stopped first. The blood from an artery will be bright red and will come out of the wound in spurts. If the blood is darker in color and flows evenly, it is from a vein.

5.38.3 - Treat For Shock

Persons who have been injured may go into shock. When someone is in shock, all of the body functions slow down. Shock can be very serious. It can cause death. Shock may develop right after a crash or later. Injured persons must be treated for shock regardless of whether or not they appear to be in shock:

- Reassure the injured person. Your calmness will help. Do not give them anything to drink.
- Cover the person with blankets or coats to hold body heat. Have the person lie flat.
- Keep onlookers back so that the injured person has air.
- Keep their head as low as possible unless there is a head injury.
- Loosen tight collars to make breathing easier.

DO NOT MOVE AN INJURED PERSON WHO CANNOT MOVE OR COMPLAINS OF PAIN IN THE BACK OR NECK. DO NOT ATTEMPT TO REMOVE THE HELMET OF AN INJURED MOTORCYCLE RIDER.

Section 6 - Signs and Pavement Markings

6.1 - Traffic Control Signals

Traffic signals are placed at intersections to keep traffic moving and to avoid a crash. Drivers, pedestrians, and bicycle riders must obey these signals, except when an officer is directing traffic. Stop on the stop line if your car is nearest the signal. Some signals change only when a car is at the stop line. If traffic signals are out of order, treat the light as if it is a four-way stop sign.

Red

Come to a complete stop at the marked stop line or before moving into the crosswalk or intersection. At most intersections, after stopping, you may turn right on red if the way is clear. Some intersections display a **"NO TURN ON RED"** sign, which you must obey. Left turns on a red light from a one-way street into a one-way street are also allowed. Anyone convicted of running a red light is required to complete a basic driver improvement course.

Yellow

Stop if you can safely do so. The light will soon be red.

Green

Go - but only if the intersection is clear. Yield to pedestrians and vehicles still in the intersection. If turning left, wait for a gap in oncoming traffic to complete the turn.

Red Arrow

Just like a red light, come to a complete stop at the marked stop line or before moving into the crosswalk or intersection. After stopping, you may turn right on a red arrow at most intersections if the way is clear. Some intersections display a **"NO TURN ON RED"** sign, which you must obey. Left turns on a red arrow from a one-way street into a one-way street are also allowed.

Yellow Arrow

Stop if you can. The light will soon be red. The yellow arrow means the same as the yellow light, but applies only to movement in the direction of the arrow.

Flashing Yellow Arrow

A flashing yellow arrow means left turns are allowed. Yield to oncoming traffic and pedestrians, The oncoming traffic has a green light.

Green Arrow

A green arrow, pointing right or left, means you may make a turn in the direction of the arrow. If the red light is burning at the same time, you must be in the proper lane for such a turn and you must yield the right-of-way to vehicles and pedestrians within the intersection.

Flashing Signals

A flashing red light means the same thing as a stop sign. It is used at dangerous intersections.

A flashing yellow light means you may move forward with caution. It is used at, or just before, dangerous intersections, or to alert you to a warning sign such as a school crossing or sharp curve.

6.2 - Lane Signals

Lane signals are used:

- When the direction of the flow of traffic changes during the day.
- To show that a toll booth is open or closed.
- To show which lanes are opened or closed.



You must never drive in a lane under a red X. A yellow X means that your lane signal is going to change to red. Prepare to leave the lane safely. You may drive in lanes beneath the green arrow, but you must also obey all other signs and signals.

6.3 - Ramp Signals

Ramp Signals are signals that control the rate of vehicles entering a freeway. The signals alternate between red and green indications and the driver must wait for the green signal before he/she may enter the freeway. Ramp signals are considered traffic control devices and failure to obey ramp signals are subject to the rules of enforcement and fines per Section 316.074, F.S.

6.4 - Traffic Signs

Shapes and Colors

There are ten colors and nine shapes of traffic signs. Each shape and each color has an exact meaning, so you must acquaint yourself with all of them.

Green: Guide, directional information.



- Red:** Stop, do not enter or wrong way.
- Blue:** Motorist services guidance. It is also used to identify parking spaces for disabled drivers.
- ORANGE:** Construction and maintenance warning.
- Brown:** Public recreation areas and guidance to areas of cultural and historical significance.
- Yellow:** General warning and advisory of unexpected roadway conditions.
- White:** Regulatory.
- Black:** Regulatory.
- Fluorescent Yellow Green:** High emphasis warning of school, pedestrian, and bicycling activity.
- Fluorescent Pink:** Warning of incident management activity.

The shape of a road sign can tell you as much about the sign's message as its color.



Octagon: Exclusively for stop signs.



Horizontal Rectangle: Generally for guide signs.



Triangle: Exclusively for yield signs.



Pennant: Advance warning of no passing zones.



Diamond: Exclusively to warn of existing or possible hazards on roadways or adjacent areas.



Vertical Rectangle: Generally for regulatory signs.



Pentagon: School advance and school crossing signs.



Round: Railroad advance warning signs.



Crossbuck: Railroad crossing.



Octagon: Stop

Stop Signs are always octagonal (8 sided). A stop sign means that you must bring your vehicle to a complete halt at the marked stop line. If there is no marked stop line, stop before entering the crosswalk on the near side of the intersection. If there is no crosswalk, stop at a point nearest the intersecting roadway where you have a clear view of approaching traffic on the intersecting roadway before entering the intersection.



A **4-Way Stop** sign means that there are four stop signs at this intersection. Traffic from all four directions must stop. The first vehicle to reach the intersection should move forward first. If two vehicles reach the intersection at the same time, the driver on the left yields to the driver on the right.



Triangle: Yield

Slow down and give vehicles crossing your path the right-of-way. If the way is clear, you may move forward slowly without stopping. Yield signs are usually placed where auxiliary roads lead into major roads.



Pennant: No Passing

You are entering a no passing zone. This sign is placed on the left side of the road, facing the driver.



Diamond: Warning

Narrow bridge. These signs warn you of special conditions or dangers ahead. Words or symbols on the sign will show why you need to use caution.



Pentagon: School Sign

This five-sided sign means you are near a school. Watch for children.



School Crossing

As you approach this sign, slow down and watch for children crossing the road. Stop if necessary. Obey signals from any crossing guards.



Children Crossing

Slow to posted speed. Watch for children!

6.4.1 - Warning Signs

Here are some common warning signs. These signs give you advance notice of possible hazards ahead. Drive with caution.



Slippery When Wet. In wet weather, drive slowly. Do not speed up or brake quickly. Make sharp turns at a very slow speed.



Divided Highway Ahead. The highway ahead is divided into two one-way roadways. Keep to the right.



Divided Highway Ends. The divided highway on which you are traveling ends 350 to 500 feet ahead. You will then be on a roadway with two-way traffic. Keep to the right.



Low Clearance. Do not enter if your vehicle is taller than the height listed on the sign.



Bicycle Crossing. This sign warns you in advance that a bikeway crosses the roadway ahead.



Merging Traffic. You are coming to a point where another traffic lane joins the one you are on. Watch for other traffic and be ready to yield the right-of-way when necessary.



Pedestrian Crossing. Watch for people crossing the street. Slow down or stop if necessary.



Narrow Bridge. The bridge is wide enough to accommodate two lanes of traffic, but with very little clearance.



Dip. There is a low place in the road. Go slowly and be ready to stop if the dip is filled with water.



Soft Shoulder. The dirt on the side of the road is soft. Don't leave the pavement except in an emergency.



One Lane Bridge. The bridge is wide enough for only one vehicle at a time. Make sure the bridge is clear of oncoming traffic before you cross.



Pavement Ends. The road surface ahead changes from a hard-surfaced pavement to a low-type surface or earth road.



Right Curve. Slow your speed and keep well to the left. The road will curve to the right.



Double Curve. The road will curve to the right, then to the left. Slow your speed, keep to the right, and do not pass.



Winding Road. There are several curves ahead. Drive slowly and carefully.



Truck Crossing. Watch for trucks entering or crossing the highway.



Cross Road. A road crosses the main highway ahead. Look to the left and right for other traffic.



Side Road. Another road enters the highway from the direction shown. Watch for traffic from that direction.



Sharp Right Turn. The road will make a sharp turn to the right. Slow your speed, keep to the right, and do not pass other vehicles.



Reduction of Lanes. There will be fewer lanes ahead. Traffic must merge left. Drivers in the left lane should allow others to merge smoothly. Right lane ends.

W4-2



Advisory Speed Sign. The highest safe speed you should travel around the curve ahead is 25 miles per hour. Advisory speed signs may be used with any diamond-shaped warning sign.



Hill/Downgrade. Slow down and be ready to shift to lower gear to control speed and save brakes.



Yield Ahead. This sign warns of a yield sign ahead. Slow down and be prepared to stop at yield sign or adjust speed to traffic.



Traffic Signal Ahead. This sign warns of traffic signals at the intersection ahead. Slow down; poor visibility is likely.



Stop Sign Ahead. When you come to this sign, slow down to be ready to stop at the stop sign check.



Two-Way Traffic Ahead. The one-way street or roadway ahead ends. You will then be facing oncoming traffic.



Animal Crossing. The animal pictured on the sign is common in this area: watch for this species crossing the road particularly during twilight and night-time hours.



W2-6

Roundabout Circle. Warning sign that provides advance notice of a roundabout.



Speed Reduction Sign. Warning sign that provides advance notice to upcoming speed limit change.

6.4.2 - Rectangle: Regulatory or Information

These signs tell you the law, so you must follow their instructions.



Remember that a red circle with a slash means NO. The sign shows you what is not allowed.



NO U-TURN - You cannot make a complete turn to go in the opposite direction where this sign is displayed. No U-turn.



You must not make a right turn at this intersection.



50 miles per hour is the highest speed you can safely travel in this area.



Speeding Fines Doubled. This is a Florida Standard sign that applies to both active school and work zones.



You cannot go straight ahead. You must turn either to the right or left.



You are going the wrong way on an expressway exit ramp. Do not drive past this sign. Turn around immediately.



A divided highway is ahead. Stay on the right side of the divider.



Parking in this space is only for vehicles displaying an official permit and transporting a disabled person.



You may travel only in the direction of the arrow.



This sign lists the maximum recommended safe speed for an entrance or exit on an expressway. Slow down to whatever speed is shown.



You may not turn right or left during the red light. You must wait for the signal to turn green.



A diamond-shaped marking shows that a lane is reserved for certain purposes or certain vehicles. The lanes are usually reserved for buses or car-pool vehicles during rush hour traffic.



The center lane is shared for left turns in both directions of travel.



You must not pass any other vehicles going in the same direction as you are while you are in this area.



When you have passed this sign, you are again permitted to pass other vehicles with care.



Traffic in left lane must turn left at the intersection ahead.



Stopping permitted only for emergencies.



At the intersection ahead traffic in left lane must turn left and traffic in adjoining lane may turn left or continue straight ahead.



This sign is used on multiple lane highways to advise slower driving traffic to stay in the right hand lane and also to do so when approached from behind by other traffic even if you are doing the speed limit.



You must not turn either to the right or to the left at this intersection.



If you park, you must always park off the pavement of the highway.



When entering a right turn lane motorists may conflict with bicyclists traveling straight. Always yield.



The Florida Department of Transportation's 511 Traffic Information Service provides bilingual (English and Spanish) real-time traffic information, including travel times, accidents, lane closures, severe weather, construction and emergency evacuation information on all Florida interstate highways, many metropolitan roadways and Florida's Turnpike. The service operates 24 hours a day on the phone by dialing 511, or on the Web at www.FL511.com. The 511 service is available from cell phones and landlines; however, standard cell phone minutes may apply.

6.4.3 - Railroad Crossing Signs and Signals

There are several signs, signals and pavement markings that indicate highway-railroad crossings. When you see one of them, slow down and be ready to stop.

Remember:

Trains cannot stop quickly. An average freight train traveling at 30 MPH needs a stopping distance of more than half a mile. Longer trains moving at faster speeds can take one and a half miles or more to stop. Any pedestrian or person driving a vehicle and approaching a railroad-highway grade crossing must stop 50 feet, but not less than 15 feet from the nearest rail of the railroad when: the electrical or mechanical warning devices are flashing, the crossing gate is lowered, a human flagger is warning of an approaching train, or an approaching train is clearly visible and is in close proximity to the railroad-highway grade crossing. **Do not proceed until you can do so safely.**



Pavement Marking

Pavement markings, consisting of an RXR followed by a stop line closer to the tracks, may be painted on the paved approach to a crossing.



Advance Warning Sign

The advance warning sign is usually the first sign you see when approaching a highway-rail intersection. The advance warning sign advises you to slow down, look and listen for a train, and be prepared to stop if a train is approaching.



Crossbuck Sign

Crossbuck signs are found at highway-rail intersections. They are yield signs. You are legally required to yield the right of way to trains. Slow down, look and listen for a train, and stop if a train approaches. Railroad crossbuck signs are found at most crossings. If there is more than one track, the sign below the crossbuck will show the number of tracks at the crossing.



Flashing Red Light Signals

At many highway-rail crossings, the crossbuck sign has flashing red lights and bells. When the lights begin to flash, stop! A train is approaching. **DO NOT STOP ON THE TRACKS OR WITHIN 15 FEET OF THE CROSSING.** If there is more than one track, make sure all tracks are clear before crossing. Do not move forward until you can do so safely. In heavy traffic make sure there is room for your vehicle on the other side before starting to cross.



Gates

Many crossings have gates with flashing red lights and bells. Stop when the lights begin to flash and before the gate lowers **across your road lane. If the gates are down, the road is closed. It is against the law to drive around or under a crossing gate, either down or being opened or closed. Do not move forward until the gates are raised and the lights stop flashing as there may be a train approaching on an adjacent track.**

Always approach highway-railroad crossings at a reasonable speed and be prepared to stop if you have to. Be especially alert when you are following buses or trucks, which may have to stop at highway-railroad crossings even when gates are up and the warning lights are not flashing. If your car stalls on the tracks don't hesitate. Get yourself and your passengers out and away from the car immediately. If a collision is imminent, the safest direction is toward the train but stay off the tracks. That way you will be least likely to be hit by your vehicle or any debris from the collision.

6.4.4 - Drawbridge Signs and Signals

Drawbridges are mechanical bridges over navigable waters that raise or turn to allow marine traffic to go under them. When they begin to move the roadway is closed to all traffic. Always use caution when driving or walking over a drawbridge.

Drawbridge Signal

These should be treated just like a regular traffic control signal.



Red

Come to a complete stop at the marked stop line. The bridge is in operation and the roadway is closed to all pedestrian and motor vehicle traffic.

Yellow

Stop if you can safely do so. The bridge is just about to start operation. If you are not able to stop, continue with caution and watch for the traffic gates.



Green

Go - watch out for pedestrians and other vehicles on the bridge.

Flashing Yellow Light Signal

This is the first sign you see when approaching a drawbridge. This sign advises you to slow down and look for the DRAWBRIDGE SIGNAL. If the yellow light is flashing to indicate the drawbridge is in operation and the DRAWBRIDGE SIGNAL is red, prepare to stop.

Many drawbridges have gates with flashing red lights and bells. Stop when the lights begin to flash and before the gate lowers across your road lane. If the gates are down, the road is closed. It is against the law to drive around or under a crossing gate, either down or being opened or closed. **Do not move forward until the gates are raised and the lights stop flashing.**

6.4.5 - Construction and Maintenance Traffic Control Signs

Various traffic control devices are used in road construction and maintenance work areas to direct drivers and pedestrians safely through the work site and to provide for the safety of highway workers.

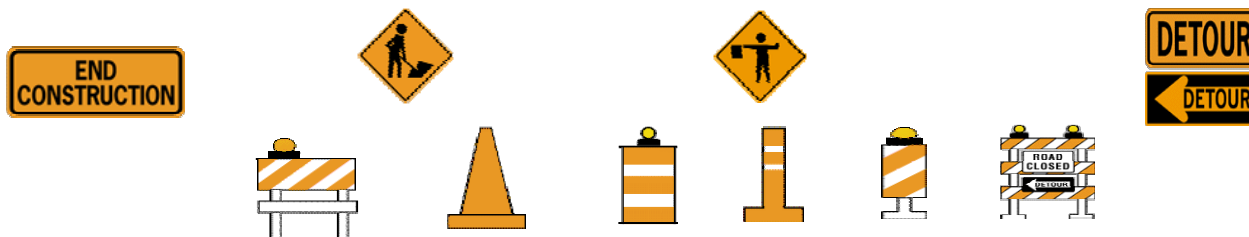


Be prepared to reduce your speed and use caution when directed to do so by a sign, flagger and/or police officer.

Construction and maintenance signs are used to notify drivers of unusual or potentially dangerous conditions in or near work areas. Most signs used in highway and street work areas are diamond shaped.

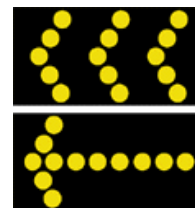
Channeling Devices

Barricades, vertical panels, drums, and cones are the most commonly used devices to alert drivers of unusual or potentially dangerous conditions in highway and street work zones. These devices are used to guide the drivers safely through the work area, and at night, they may be equipped with warning lights. When a Road Closed sign is displayed, do not drive on this road. Look for a detour or another route. Stripes on barricades and panel devices slope downward in the direction traffic must travel.



Flashing Arrow Panels

Flashing arrow panels are used both during the day and at night to give advance warning and directional information to drivers, where it is necessary to move to the right or to the left into another lane.



A horizontal flashing bar indicates a warning - use caution approaching the work area.

Flaggers

Flaggers are often provided in highway and street work zones to stop slow, or guide traffic safely through the area.

Flaggers wear orange vests or jackets and use red flags or stop/slow panels to direct traffic through work zones.



6.4.6 - Special Signs

Slow Moving Vehicle

Vehicles going less than 25 miles per hour (such as farm equipment) must display this sign on the rear when using public highways.



Green Guide Signs

Green and white signs give information about directions and distances. Guide signs on expressways show you which lanes to use to get where you want to go. Routes that run generally East-West have even numbers and those running North-South have odd numbers.



Blue and White Service Signs

Blue and white signs direct you to services, such as gas, food, motels and hospitals.



Brown and White Signs

Brown and white signs point out scenic areas and parks.

6.5 - Pavement Markings

Lines, symbols and words are often painted on a roadway to help direct drivers and control traffic flow. You must know what the different lines and colors mean and obey them as you would traffic signs or signals.

White and yellow lines are used along pavement edges and between lanes to keep vehicles in line. These lines may be solid or broken (long dashes), single or double.

Unless you are turning, exiting a highway, or changing lanes, always stay between the lines marking your lane.

Yellow Lane Lines

Yellow lane lines separate lanes of traffic moving in opposite directions. Single yellow lines may also mark the left edge of the pavement on divided highways and one-way streets.

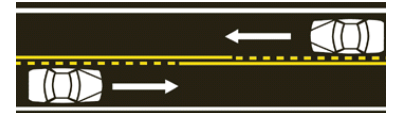
Broken Yellow Line

A broken yellow line separates lanes of traffic moving in opposite directions. Stay to the right of the line, unless you are passing a vehicle in front of you. When passing, you may cross this line temporarily when it is safe to do so.



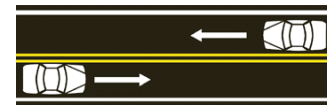
Double Yellow Lines: One Solid, One Broken

A solid yellow line to the right of a broken yellow center line means passing or crossing is prohibited in that lane, except when turning left. If the broken line is closer to you, you can cross the broken line only to pass another vehicle and only when it is safe to do so.



Double Yellow Lines

Double solid yellow lines prohibit vehicles moving in either direction from crossing the lines. You may not cross these lines unless turning left when it is safe to do so.



White Lane Lines

White lane lines separate lanes of traffic moving in the same direction. Single white lines may also mark the right edge of the pavement.

Broken White Line

A broken white line separates two lanes traveling in the same direction. Once you have signaled and if it is safe to do so, you may cross this line when changing lanes.



Solid White Line

A solid white line marks the right edge of the roadway or separates lanes of traffic moving in the same direction. You may travel in the same direction on both sides of this line, but you should not cross the line unless you must do so to avoid a hazard.

Double Solid White Line

A double solid white line separates two lanes of traffic going in the same direction. Crossing a double solid line is prohibited.

Solid with Turn Lane Arrow

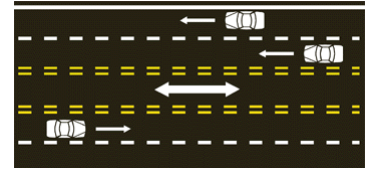
Solid white lines are used for turn lanes and to discourage lane changes near intersections. Arrows are often used with the white lines to show which turn may be made from the lane.

If you are in a lane marked with a curved arrow and the word ONLY, you must turn in the direction of the arrow. If your lane is marked with both a curved and straight arrow, you may either turn or go straight.



Reversible Lanes

Some highways have reversible traffic lanes to help handle rush-hour traffic. The direction of traffic is normally reversed at set times each day. These pavement markings are used along with special lane signals and other signs and symbols. A solid white line marks the edge of the pavement on most roads. Stop lines, crosswalks and parking spaces are also marked by white lines. Symbols such as arrows are in white also. A single yellow line marks the left edge of all divided or one-way roadways. Curbs are often marked yellow in no parking zones near fire hydrants or intersections. It is unlawful to park in or drive through areas that have pavement markings indicating fire lanes or safety zones.



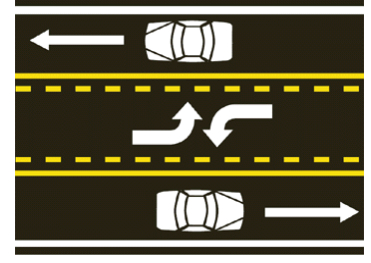
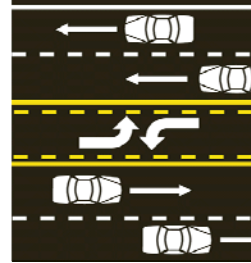
The lane marking arrow, in the center lane in the diagram below, indicates that traffic in this lane can be reversed in accordance with local traffic controls due to "rush hour" traffic or other special traffic conditions.

Drivers from either direction may use the center lane for left turns.

Two-Way Roadway with Center Lane

Two-way roadway with a center lane for left turns in either direction of travel. The specially marked center turn lane is intended for slowing down and for sheltering turning vehicles and may not be used for passing.

Drivers from either direction may use the center lane for left turns.



Section 7 - Vehicle Equipment

These items will be checked before you take the driving test for your license. If your tires, brake light, directional signals, brakes, steering, horn or mirror are not in good condition, you will not be allowed to take the driving test. You may be stopped at any time by a law enforcement officer for a vehicle inspection.

7.1 - Equipment Standards

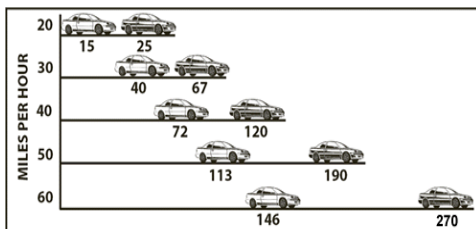
The equipment on your car must meet certain standards. These are listed below.

7.1.1 - Brakes

Your car must have two braking systems. Each must be able to stop the car alone. The parking or emergency brake should be strong enough to hold the car on any hill. Your brakes must be able to stop your car within the distance shown on the chart.

7.1.2 - Braking Distance

You must be able to stop your car within the distance shown by the black cars when you use the foot brake. For safest driving, keep your brakes in such good condition that you can stop within distance shown by the white cars.



It is important to note that the graph illustrates the braking distance AFTER YOU HAVE APPLIED YOUR BRAKES.

NOTE: Reaction times in laboratories are 3/4 of a second. In the driving environment, your reaction time would be closer to 1.5 seconds and the distance you would travel at 50 mph would be 110 feet. To this must be added a REACTION DISTANCE, which is the distance you travel from seeing the danger to putting your foot on the brake pedal. Since 3/4 of a second is the average reaction time, a motorist will travel 11 feet for each 10 MPH of speed before hitting the brake. At 50 MPH this distance would be 55 feet!

7.1.3 - Steering lock Operation

Vehicles have various systems used to remove the keys from the ignition. Remember, Some ignitions will automatically lock the steering wheel if the key is removed while moving. Here are some common steering wheel lock systems and a description of how to remove the key:

The Transmission Park System

Park. Shift the transmission into the "park" position. Turn the key to LOCK and remove.

The Two Hand Button System

Park. This system requires two hands. Depress button below the steering column. Turn key to the LOCK and remove.

The Lever System

Park. Depress lever located near the ignition. Turn key to LOCK and remove.

The One Hand Button System

Park. Depress button located near the ignition. Turn key to LOCK and remove.

The Push In System

Park. Turn key OFF, push in. Turn key to LOCK and remove.

The Turn and Remove System

Park. Turn key to LOCK and remove.

Automobile Safety Foundation

7.1.4 Lights:

Your car must have the following lights:

- Bright (high-beam) headlights which show objects 450 feet ahead.
- Dimmed (low-beam) headlights which show objects 150 feet ahead.
- Two red taillights mounted on the rear, visible from 1,000 feet.
- A white light that makes the license plate visible from 50 feet (The plate must be kept clean).
- Two red stoplights. They must be seen from 300 feet in the daytime, and must come on when the foot brake is pressed.

All vehicles, including animal-drawn vehicles, must have at least one white light visible from a distance of not less than 1,000 feet to the front. They must also have two red lights visible from a distance of not less than 1,000 feet to the rear, or one red light visible to the rear for a distance of 1,000 feet and two red reflectors visible from all distances from 600 feet to 1,000 feet.

7.2 - Other Equipment Standards

Horn: Your vehicle must have a horn, which can be heard from a distance of 200 feet.

Windshield Wiper: Your vehicle must have a windshield wiper in good working order for cleaning rain, snow or other moisture from the windshield.

Windshields: Must be safety glass and may not be covered or treated with any material, which has the effect of making the windshield reflective or in any way non-transparent. It must be free of any stickers not required by law.

Side windows: May not be composed of, covered by, or treated with any material which has a highly reflective or mirrored appearance and reflects more than 35% of the light.

Directional signals: You must have electrical turn signals if your vehicle measures more than 24 inches from the center of the top of the steering post to the left outside limit of the body, or when the distance from the steering post to the rear of the body or load is greater than 14 feet.

Tires: Your tires should have visible tread of at least 2/32 of an inch across the base with no worn spots showing the ply. Smooth tires on wet roads contribute to thousands of serious crashes.

Mirrors: Your vehicle must have at least one rearview mirror which gives a view of the highway at least 200 feet to the rear.

Keeping your Car in Good Condition

No matter how well you drive, you are not safe unless your vehicle is in good condition. If it is not, you could have a serious crash.

Brakes: Check to see that the pedal stays well above the floor when you step on it. If the car pulls to one side when you use the brakes or you hear any scraping or squealing noises, your brakes may need to be repaired.

Lights: Replace burned-out bulbs and clean lenses often. Dirty headlights can cut your night vision by one-half. Burned out signal lights or brake lights mean you can't tell other drivers what you are doing. Keep your lights adjusted so that you don't blind oncoming drivers.

Windows and Windshields: Keep the glass clean, inside and out, to reduce glare.

Rear windows: When the rear window is composed of, covered by, or treated with any material which makes the rear window nontransparent, the vehicle must be equipped with side mirrors on both sides.

Bumper Height Requirements

Owners of automobiles and pickup trucks are required to have both front and rear bumpers mounted within certain height levels. Height limitations are governed by the net shipping weight of the vehicle, not the modified or altered weight. The maximum allowable heights between the pavement and bottom of the front and rear bumper, provided by section 316.251, Florida Statutes, are:

- Cars with a net weight of less than 2,500 pounds - 22 inches front and rear.
- Cars 2,500 pounds or more but less than 3,500 pounds - 24 inches front; 26 inches rear.
- Cars 3,500 pounds or more - 27 inches front; 29 inches rear.
- Trucks under 2,000 pounds 24 inches front; 26 inches rear.
- Trucks 2,000 pounds or more but less than 3,000 pounds - 27 inches front; 29 inches rear.
- Trucks 3,000 pounds or more but not more than 5,000 pounds - 28 inches front; 30 inches rear.

7.3 - Equipment Not Permitted

You may not have on or in your vehicle:

- Red or blue emergency lights. These are for emergency and law enforcement vehicles only.
- A siren, bell or whistle.
- A very loud muffler or one that lets out smoke.
- Signs, posters or stickers on the windshield or windows (except those required by law).
- A television which the driver can see.
- More than two spotlights, cowl or fender lights, fog lights (in front), or other extra lights (in front).
- Headsets worn by driver while operating a vehicle.

7.4 - Additional Equipment Required on Certain Vehicles

Trailers must have the following equipment:

- Every trailer or semi-trailer weighing more than 3,000 pounds: On the front, two clearance lamps, one at each side. On each side, two side marker lamps, one at/or near the front and one at/or near the rear. On the rear, two clearance lamps, one at each side, and two reflectors, one at/or near the front and one at/or near the rear. There must also be two stoplights on the rear of these vehicles. One stop light is permitted on vehicles built before January 1, 1972.
- Every pole trailer weighing more than 3,000 pounds: On each side, one side marker lamp and one clearance lamp (which may be in combination), to show to the front, side and rear, on the rear of the pole trailer or load, two reflectors, one at each side.
- Every trailer, semi-trailer or pole trailer weighing 3,000 pounds or less: On the rear, two reflectors, one on each side.
- Every trailer must have a stop light if the trailer covers the stop lights on the towing vehicle. Every trailer or semi-trailer weighing 3,000 pounds or more must have brakes which can be operated by the driver in the towing motor vehicle. The brakes must be designed and connected so that they will automatically stop the trailer if it breaks away from the towing vehicle.

7.5 - Limitations on Towing

The following rules apply to the drawbar or towing connection:

- It must be strong enough to pull all towed weight.
- It must not be more than 15 feet long unless you are towing poles, pipes, machinery, or other objects that cannot be easily taken apart.
- If a chain, rope, or cable is used as the towing connection, you must have a white flag at least 12 inches square attached to it.

7.6 - Limitations on Loading; Securing the Load

- You may not drive or move any loaded vehicle on the highway if the load is not secure. The load must not be able to drop, shift, leak, or otherwise escape.
- You must use a close-fitting cover when hauling loads which could fall or blow onto the roadway. Examples: dirt, sand, lime-rock, gravel, silica, trash or garbage.
- Every truck carrying logs or pulpwood must use proper equipment, including lock chains that will securely fasten the load.

7.6.1 - Projecting Load

When a load extends to the rear 4 feet or more beyond the bed or body of the loaded vehicle, it must be clearly marked.

7.7 - Nighttime

At night, or when you cannot see clearly, at least 1,000 feet ahead, the following markers must be used:

- Two red lamps on the back of the load which can be seen from at least 500 feet to the rear.
- Two red reflectors on the rear which can be seen at night from all distances between 100 and 600 feet when directly in front of low-beam headlights. These reflectors should be placed to show the full width of the load. Two red lamps, one on each side of the load, which can be seen.
- Two red lamps, one on each side of the load, which can be seen from at least 500 feet. These lamps should be placed near the end of the projecting load.

7.8 - Daytime

In the daytime, 4 red flags at least 12 inches square must be placed on the projecting load where red lamps are used at night (extreme rear and sides).

NOTE: If the trailer or motor vehicle is transporting logs, long pulpwood, poles or posts that extend more than 4 feet beyond the rear of the load, then you must have one amber strobe-type lamp equipped, so that the lamp is visible from the rear and both sides of the projecting load. The lamp must be operational and seen any time of day or night.

7.9- Anti-Locking Brake System (ABS)

Anti-lock brakes prevent skidding and allow drivers to steer during an emergency braking situation. ABS can help improve vehicle stability (avoiding spin-outs), steering ability (directing the car where the driver wants it to go) and stopping capability (distance needed to stop the vehicle).

Many drivers learned the correct way to stop in an emergency situation where traction is lost and the vehicle slides is by pumping the brakes. While this is correct with conventional brakes, with ABS it is different. Drivers with ABS need to press down hard on the brake pedal, hold it and steer out of danger. In an emergency situation, the ABS automatically pumps the brakes at a faster rate than the driver could. Drivers should be aware that removing steady pressure from the brake pedal or pumping the brakes will disengage or "turn off" the ABS.

One of the most important benefits of ABS is that the driver can steer the vehicle away from hazards while braking. Drivers should not turn the steering wheel hard or jerk the vehicle in one direction. Control of the vehicle can be maintained by steering where the driver wants to go. Drivers need to check that traffic is clear when deciding where to steer and always remember to steer back into the original lane as soon as the hazard is cleared.

Vehicles can be equipped with two different types of ABS:

- Four-wheel on passenger cars and some light trucks. Always remember to brake hard and steer. It is important to keep firm and constant pressure on the brake pedal while stopping.

Rear-wheel-only on some light trucks. It prevents the rear wheels from locking up so that the back end of the vehicle does not skid sideways. The front wheels can still lock up and the driver will lose steering control if this happens. In this situation, the driver should let up on the brake pedal with just enough pressure to allow the front wheel to start rolling again to regain control. When the driver feels that he has regained steering control, the brake pedal should again be firmly engaged.

Drivers can determine whether their cars have ABS by looking for a lighted ABS symbol on the dashboard right after starting the engine, checking the owner's manual or asking the dealer.

7.10 - Emissions - Please Do Not Tamper

It is illegal to tamper with, remove, or cause not to work any pollution control device on your vehicle. Those who do are guilty of a first or second degree misdemeanor, depending on the offense. Tampering with emissions control devices damages your vehicle and can cause the following:

- Increased air pollution.
- Lower gas mileage and less vehicle efficiency.
- More maintenance costs.
- Respiratory (breathing) difficulties.

7.11 - Bicycles

Persons riding bicycles or mopeds on a roadway have the **same rights** (with certain exceptions) **and duties** as motor vehicle drivers and may be ticketed for traffic violations. Know and obey these laws:

- Bicyclists must obey all traffic controls and signals.
- An adult bicyclist may carry a child in a backpack or sling, child seat or trailer designed to carry children.
- You may not allow a passenger to remain in a child seat or carrier when you are not in immediate control of the bicycle.
- Bicyclists and passengers under age 16 are required to wear helmets approved by ANSI, Snell or other standard helmets recognized by Florida. (Bicycle helmets are recommended for all ages)
- Every bicycle must be equipped with a brake or brakes which allow the bicyclist to stop within 25 feet when traveling from a speed of 10 miles per hour on a dry, level, clean pavement.
- A bicyclist on a sidewalk or crosswalk must yield the right-of-way to pedestrians and must give an audible signal before passing.
- Keep at least one hand on the handlebars.
- On the roadway, check behind you before changing lanes.
- For use between sunset and sunrise, a bicycle must be equipped with a lamp on the front exhibiting a white light visible from 500 feet to the front and both a red reflector and a lamp on the rear exhibiting a red light visible from 600 feet to the rear.
- If you are not traveling at the speed of other traffic, stay on the right-most portion of the roadway except when passing, making a left turn, avoiding hazards or when a lane is too narrow for you and a car to share it safely.
- When operating a bicycle on a one-way street with two or more traffic lanes, you may ride as close to the left-hand edge of the roadway as practicable.
- If you intend to make a left turn, you are entitled to full use of the lane from which the turn is made.
- In addition to the normal vehicular-style left turn, you may proceed through the right-most portion of the intersection and turn as close to the curb or edge as possible at the far side. After complying with any official traffic control device, you may proceed in the new direction of travel.
- Signal your intent to turn to other vehicle operators by pointing in the direction you are going to turn.
- Do not wear headphones or any other listening device except a hearing aid while bicycling.
- Do not ride a bicycle when under the influence of alcohol or drugs.

7.12 - Mopeds

Persons riding mopeds have the same rights and duties as drivers of motor vehicles. Moped riders committing traffic violations will receive citations.

Know and obey these moped laws:

- You must be 16 years of age or older to operate a moped on a public road.
- Operators of mopeds must have the minimum of a Class E license. No motorcycle endorsement is required.
- Mopeds must be registered annually and a tag purchased.
- Mopeds may not be operated on bicycle paths or foot paths.
- Moped operators do not have to carry PIP insurance.
- Operators 16 years of age or older are not required to wear helmets.

7.13 - Vehicle Licensing

If you accept employment or engage in a trade, profession or occupation in Florida or if you enroll your children to be educated in a public school in Florida, the vehicle you own must have a Florida registration certificate and license plate. You must obtain the registration certificate and license plate within 10 days after beginning employment or enrollment. You also must have a Florida Certificate of Title for your vehicle, unless an out-of-state financial institution holds the title and will not release it to Florida.

7.14 - Proving Ownership and Insurance Coverage

To get your license plate and registration certificate, you must prove that you own your vehicle and that you have Florida Personal Injury Protection (PIP) insurance coverage for your vehicle. You must prove ownership by showing your certificate of title. You must prove PIP coverage by showing a Florida insurance identification card or other acceptable proof. The vehicle identification number (VIN) on any vehicle previously titled or registered in another state must be verified by one of several designated officials before the vehicle can be titled and registered in Florida. VIN verification is not required on any new vehicles, regardless of whether purchased in Florida or out of state, mobile homes, trailer type recreational vehicles (travel trailers, camp trailers, truck campers, and fifth wheel recreational trailers) or trailers and semi-trailers with a weight of less than 2,000 pounds.

7.15 - Applying For Title, License Plates and Registration

Apply for title, license plates and registration at any tax collector's office in Florida. The cost of your license plate will depend on the type and weight of your vehicle. Your vehicle must always have a current license plate and you must always have your vehicle's registration when you are driving. If you buy a vehicle from a dealer in Florida, the dealer must apply for a certificate of title, certificate of registration and license plate for you. If you buy a vehicle from an individual, you must obtain the title from the individual and apply for a certificate of title in your name. You may apply for certificate of title, certificate of registration and license plate at the same time. You cannot get a license plate until you have a title to prove that you own the vehicle. All first time driver license applicants who hold an out-of-state license should register their vehicle in Florida before a Florida driver license is issued.

7.15.1 - Renewal

Vehicle license plates and registrations must be renewed each year, on or before the birthday of the first owner listed on the registration form. Each time you renew, you must prove that you have the required insurance, unless on file and electronically updated. You may renew by mail or

through the internet at www.gorenew.com. Registrations expire at midnight on the birthday of the first owner listed on the registration form, except for:

- Mobile homes - renew yearly by December 31.
- Truck-tractors and semi-trailers - renew yearly by December 31.
- Vehicles owned by companies and corporations, and some commercial vehicles - renew yearly by June 30.

For more information or assistance on motor vehicle title and registration, contact your county tax collector's office.

Section 8 - Driving School Providers

8.1 - Traffic Law Substance Abuse Education Course Providers

Reasons for Attending Traffic Law and Substance Abuse Education

If you have never held a regular driver license in any state, country, or jurisdiction, you must complete a Traffic Law and Substance Abuse Education course before applying for a Learner's license in the state of Florida. The driver education courses offered by some county school boards may substitute for this requirement. Please contact your local school board for further information. If you are under 21 years old and receive a notice of suspension for driving with a BAL of .02 to .05, you must complete a Traffic Law and Substance Abuse Education course in order to reinstate your driver license on a hardship basis.

8.1.1 - Traffic Law and Substance Abuse Education Course Providers

The following is a list of approved course providers. Those providers who are approved to offer their course statewide may or may not offer schools in your area. Call to locate a school near you.

The Florida Department of Highway Safety and Motor Vehicles must approve courses that meet Florida statutory requirements for this program. Those providers who are approved to offer their course statewide may or may not offer schools in your area.

While some course providers offer in-person (classroom) and Internet delivery of the approved courses themselves, most contract with local traffic schools to provide these services. You should always ensure that the course you select meets your specific needs for attendance.

Please refer to your local phone directory or use an Internet search engine to locate traffic schools in your area.

8.2 - Advanced Driver Improvement Courses

8.2.1 - Reasons for Attending Advanced Driver Improvement

If your driver license was suspended in the state of Florida for points or as a habitual traffic offender (non-DUI related), or by court order, you must complete an advanced driver improvement course.

Note: If you hold a Florida driver license and receive a ticket for a moving violation in Arizona, the state of Arizona may withhold adjudication if you complete a state-approved advanced driver improvement course.

To locate an approved online advanced driver improvement course, refer to your local telephone directory, or contact the course providers listed below.

8.2.2 - Advanced Driver Improvement Course Providers:

The Florida Department of Highway Safety and Motor Vehicles must approve courses that meet Florida statutory requirements for this program. Those providers who are approved to offer their course statewide may or may not offer schools in your area.

While some course providers offer in-person (classroom) and Internet delivery of the approved courses themselves, most contract with local traffic schools to provide these services. You should always ensure that the course you select meets your specific needs for attendance.

Please refer to your local phone directory or use an Internet search engine to locate traffic schools in your area.

8.3 - Basic Driver Improvement Courses

8.3.1 - Reasons for Attending Basic Driver Improvement

You must complete a basic driver improvement course (Traffic Collision Avoidance Course) if you want to retain your driver license in the following circumstance:

- You were a driver in a crash and are found at fault and someone was transported to the hospital or
- You had two crashes in a two-year period, which resulted in property damage greater than \$50 or
- You are convicted of running a red light
- You were convicted passing a school bus when it displays a stopped signal

You were convicted of racing on highway

If you receive a ticket for a non-criminal moving violation, and you do not hold a commercial driver license, you may elect to attend a basic driver improvement course in lieu of points on your driving record.

In some cases, you may choose to attend a basic driver improvement course to receive insurance discounts. This discount is solely at the discretion of your insurance company.

8.4 - Electing to Attend Traffic School

Drivers with a Class A, B, or C license, or drivers charged with exceeding the speed limit by more than 30 mph may not make an election under this subsection. If, as a result of a moving violation, you elect to attend and complete a basic driver improvement course, you will receive the following benefits:

1. Your insurance rates cannot go up and your policy cannot be cancelled because of this violation, unless this involved a crash where you were at fault.
2. Points may not be added to your driver license record, adjudication of guilt is withheld, safe driver status is maintained if applicable. You may not make an election under this subsection if you have made this election in the preceding 12 months. A person may make no more than five elections in a lifetime. To determine if you are eligible to make an election to attend traffic school, check our web site at www.flhsmv.gov.

Within 30 days from the date you received the traffic citation and prior to attending class, you must:

1. Inform the Clerk of Court in the county where you received the citation that you want to go to traffic school, and
2. Pay an election fee to the Clerk of Court in the county where you received the citation.

You may contact the traffic school of your choice to register for class. The Florida Department of Highway Safety and Motor Vehicles must approve the course. Traffic schools are listed in your local telephone directory under "driving instruction" or "traffic schools." Approved course providers are also listed below. To locate an approved on-line basic driver improvement course, refer to your local telephone directory, or contact the course providers listed below.

A full list of your options for satisfying your traffic citation is on the back of the citation. You are required to choose one of the three options within 30 days of receiving the citation.

8.4.1 - Basic Driver Improvement Course Providers:

The Florida Department of Highway Safety and Motor Vehicles must approve courses that meet Florida statutory requirements for this program. Those providers who are approved to offer their course statewide may or may not offer schools in your area.

While some course providers offer in-person (classroom) and Internet delivery of the approved courses themselves, most contract with local traffic schools to provide these services. You should always ensure that the course you select meets your specific needs for attendance.

Please refer to your local phone directory or use an Internet search engine to locate traffic schools in your area.

8.5 - Florida Licensed DUI Programs

8.5.1 - Reasons for attending a DUI program:

You may be required to complete a licensed DUI program if your license is administratively suspended for unlawful blood or breath alcohol level, if you refuse to submit to a breath, blood, or urine test, or if you are convicted of driving under the influence or possession of a controlled substance.

8.5.2 - DUI Course Providers

The Florida Department of Highway Safety and Motor Vehicles must license schools that meet Florida statutory requirements for this program. Following are the currently licensed DUI schools and the counties they serve. You must attend the DUI school that serves your county of residence, employment or school attendance.

Serving: Alachua, Bradford, Dixie, Gilchrist, Levy and Union Co.

North Central Florida Safety Council, Inc.

352-377-2566

Serving: Baker, Clay, Columbia, Duval, Hamilton, Lafayette, Nassau, St. Johns, and Suwannee Co.

Northeast Florida Safety Council, Inc.

904-399-3119

Serving: Bay, Calhoun, Gulf, Holmes, Jackson, and Washington Co.

14th Judicial Circuit DUI Program

850-872-7730

Serving: Brevard Co.

Florida Safety Council	321-631-2347
Serving Broward Co.	
Broward County Commission on Alcoholism, Inc.	954-763-4505
Metro Safety Council	954-476-0055
Serving Collier Co.	
David Lawrence Mental Health Center, Inc.	239-643-6101
Southwest Florida Safety Council, Inc.	239-793-5552
Serving Miami-Dade Co.	
Advocate Program, Inc.	305-704-0200
Metro Traffic School Dade County	305-513-0063
Serving: DeSoto, Manatee, and Sarasota Co.	
State College of Florida Foundation	941-752-5286
Serving; Flagler Co.	
Sunshine Safety Council, Inc.	386-258-2132
Serving: Franklin, Gadsden, Jefferson, Leon, and Liberty, Wakulla, Madison, and Taylor Co.	
North Florida Safety Council, Inc.	850-877-5193
Serving: Charlotte, Glades, Hendry and Lee Co.	
Southwest Florida Safety Council, Inc. (Lee)	239-332-3008
Southwest Florida Safety Council, Inc. (Charlotte)	941-629-5635
Southwest Florida Safety Council, Inc. (Glades & Henry)	863-675-0544
Serving: Monroe Co.	
Advocate DUI Program of Monroe County	305-289-5605
Serving: Indian River, Martin, Okeechobee, and St. Lucie Co.	
C.O.R.E. Program Inc.	772-286-7333
Serving: Okaloosa and Walton Co.	
Bridgeway Center, Inc.	850-833-7474
Serving: Hillsborough Co	
DUI Counterattack Hillsborough, Inc.	813-875-6201
Serving: Orange, Osceola, and Seminole Co.	
Florida Safety Council (Orange County)	407-896-1894
Florida Safety Council (Osceola County)	407-846-2555
Florida Safety Council (Seminole County)	407-831-7200
Serving: Escambia and Santa Rosa Co.	
Lakeview Center, Inc.	850-494-5656
Serving: Palm Beach Co.	
Metro Traffic School Palm Beach	561-963-7555
Pride Integrated Services, Inc. of Palm Beach County	561-615-0767
Serving: Pinellas Co.	
Suncoast Safety Council, Inc.	727-442-0233
Serving: Pasco Co.	
Pride Integrated Services, Inc. of Pasco County	727-847-3411
Serving: Hardee, Highlands, and Polk Co.	
Tri-County Human Services	863 701-1919

Serving: Putnam and Volusia Co.

Sunshine Safety Council, Inc.	386-253-6400
-------------------------------	--------------

Serving: Citrus, Hernando, Lake, Marion, and Sumter Co.

West Central Florida Driver Improvement, Inc.	352-622-6991
---	--------------

8.6 - Mature Driver/Insurance Discount Courses

Courses approved for the purpose of section 627.0652, Florida Statutes senior citizens discount insurance courses.

AAA-Safe Driving for Mature Operators	Consult your local phone book
AARP Driver Safety Program	888-227-7669
American Safety Council – MatureDriverClass.com	800-771-2255
American Safety Institute – Senior Driving Course Internet	800-800-7121
American Safety Institute – Senior Driving Course	800-800-7121
Florida Educational Driving School – FEDS Senior Driving Course	954-345-5155
I DRIVE SAFELY – Online Mature Driver Course	800-723-1955
National Safety Council – Coaching the Mature Driver	800-237-0676

8.7 - 3-in-3 Driver Change Course

U-Drive Safe	850-461-3540
Bernuy Driving School	941-355-4244
Southeast Florida Motorcycle Safety School	305-430-9997
Motorcycle Training of Florida	904-334-5438
B&W Driving School	407- 292-5966
Orange-Osceola Safety Institute	407- 566-8713
American Safety Institute	800- 800-7121
Ault's Driver Education Center	941- 474-5125
Ride Green	239-432-0002
Atlantic Driving School	863-298-9600
Goldwing Center for Driving Safety	850-249-7771
A.T.C. Driving School	561-333-4646
A Street Smart Driving School	386-801-9890
Eagle Institute of Driving	813-996-6725
National Traffic Safety Institute	888-497-4499
South Florida Safety Program	305-255-7118
Central Florida Community College	352-687-1647
Florida Two Wheel Training	407-873-7233
Florida Motorcycle Training	352-589-7233

Section 9 - Study Questions

Study Questions-Class E & Learner's License

On your road rules examination, you will be given 20 questions and asked to choose the right answer for each. During the written exam, you may not use books or notes, and you may not talk to anyone except the examiner.

You should read each question carefully, and read each of the four possible answers. Choose the best answer. A sample question with the correct answer is shown below.

The main reason for examining persons before issuing driver licenses is:

- To provide revenue for state government.
- To keep a record of the number of drivers.
- For accident records and insurance companies.
- To determine the applicant's abilities, knowledge and skills.

Your complete written examination will include 20 road signs and 20 questions on road rules. To pass, you must choose the right answers to at least 15 road signs and 15 road rules questions. Sample test questions are listed below. These questions will not necessarily appear on the examination. Answers to all of the sample questions can be found in this book.

1. If you knowingly make a false statement in an application for a driver license or identification card, can you be fined and placed in prison upon conviction?
2. Can a person temporarily operate a farm tractor on the highway without a driver license?
3. You must obtain a new license showing the new address within how many days of moving?
4. If you lose your Florida driver license and need a replacement license, where do you apply for it?
5. If you failed to answer a traffic summons, would you be able to renew your license?
6. What would happen to the license of a driver who was involved in an accident and did not stop to help persons who were injured?
7. If you receive twelve points within twelve months, for how long will your license be suspended?
8. What are the penalties for driving under the influence (DUI)?
9. Both your judgment and vision are affected after drinking alcohol. Which is affected first?
10. What are the penalties for refusing to take a test to determine whether you are intoxicated?
11. What type of insurance must you have on motor vehicles with four or more wheels?
12. If your driver license is suspended for too many points, what type of insurance must you either purchase or prove that you had on effective date of the suspension?
13. What are the penalties for littering?
14. If you hit a parked car and are unable to find the owner, what should you do?
15. When a crash results in property damages of any amount, must the driver notify the Florida Highway Patrol, the Sheriff's Department, or the City Police Department?
16. After a crash has been investigated by an officer, does the driver need to send a written report to the Department of Highway Safety and Motor Vehicles?
17. Who is required to wear seat belts when riding in the front seat of a car or a pickup truck?
18. Who could be charged with a violation if a fourteen-year-old front-seat passenger is not wearing a seat belt?
19. What is the maximum speed limit for passenger cars on a two-lane highway during the daytime?
20. What is the maximum speed limit in a residential area if there is no speed limit sign?
21. What is the maximum speed limit on an interstate highway on a clear day? In a rural area?
22. When are you driving too slowly, can you be issued a ticket?
23. What must you do when approaching a person who is riding or leading a horse upon or near the roadway?
24. What must you do when you see a pedestrian with a white cane in the street ahead of you?
25. To what ages does the Child Restraint Law apply?
26. When you are entering a highway or street from a private driveway and the way is clear, can you move forward without stopping first?

27. Are vehicles traveling in the opposite direction of school buses that have stopped to unload children on a divided highway with a dividing barrier required to stop?
28. When a school bus stops to unload children on a divided highway, should the vehicles traveling in the same direction as the bus stop?
29. If a school bus stops to unload children on a four-lane highway divided only by a four-foot paved strip, must vehicles traveling in the opposite direction stop?
30. For how many feet before you start to turn should you begin your turn signal when you are driving on a highway?
31. Suppose you are driving on a four-lane highway. From which lane should you turn? Into which lane should you turn?
32. What is the arm signal for a left turn?
33. When may you drive in the left lane of a road with four or more lanes with two-way traffic?
34. After passing a vehicle, you must return to the right side of the road before coming within how many feet of an oncoming vehicle?
35. At what places is it unlawful to overtake and pass?
36. Can a driver who crosses a solid line on the right of the center line of the highway be issued a ticket for the violation?
37. What is the recommended safe following distance?
38. Which way should you turn your wheels when parking facing uphill where there is a curb? Which way should you turn them where there is not a curb?
39. Can you park your car on a sidewalk, within an intersection, or on a crosswalk?
40. May you drive with just your parking lights on, in place of your headlights?
41. Are motor scooters whose engines have less than 150 cubic centimeter displacement allowed to be driven on an expressway?
42. What should you do if you drive past the exit on an interstate highway where you wanted to get off?
43. At what times should you use your headlights?
44. When approaching another vehicle from the rear at night, within how many feet must you dim your bright headlights?
45. Within how many feet of an oncoming vehicle should you dim your bright headlights?
46. Under what conditions must you use your headlights when driving in the daytime?
47. If you approach a red light and a traffic officer directs you to go through the intersection without stopping, what should you do?
48. What does a green arrow showing at the same time as a red traffic light mean you can do?
49. After a full stop at a red traffic light may a driver turn right if the way is clear?
50. What does a red traffic light mean? What does a flashing red traffic light mean?
51. Can you proceed with caution when you approach a flashing yellow light?
52. Where do you usually find "YIELD RIGHT-OF-WAY" signs posted?
53. If more than one vehicle is approaching a four-way stop sign and you are the first one to get there and stop, do you have the right to move forward first?
54. What does a solid yellow line to the right of the center line of the highway mean?
55. What does a double solid yellow line in the center of the highway mean? What does a double solid white line in the center of the highway mean?
56. What does a broken white line on the highway mean?
57. When the foot brake is pressed, which light must come on?
58. In addition to other equipment, is your vehicle required to have a white light that makes the license plate visible from 50 feet, a windshield wiper and a horn?
59. What rights and duties do riders of bicycles and mopeds have?
60. When may a motorist preparing to make a right hand turn, move into a bike lane?
61. What should a motorist do when they approach a bicyclist from the rear?
62. What should you do when preparing to turn right on a roadway with a bike lane?
63. What is the proper way to use anti-lock brakes in an emergency situation?
64. What do anti-lock braking systems prevent when used in an emergency stopping situation?

65. If a trailer covers the stoplight of the towing vehicle, where else must a stoplight be?
66. Where should reflectors be mounted?
67. Give three examples of loads that need to be covered to avoid items, falling or blowing on roadway.
68. How many feet to the rear should you be able to see objects through the rearview mirror?
69. When one vehicle is towing another by means of a chain, what does the chain need to have displayed on it?
70. How long can the drawbar be between the towing vehicle and the vehicle being towed?
71. Assume that a load extends 4 or more feet beyond the bed or body of a vehicle driven on a highway in the daytime. How many flags must be used to mark it, and what color should they be?